



HIGH PRECISION COLLET CHUCK & GUIDE BUSH

Shenzhen Zeling precision industry Co., Ltd.

✉ Email: james.lee@precollet.com

📞 W/A, Skype, Wechat: +8618400145085

🌐 www.precollet.com

CONTENTS

I..... **HOW TO USE PRECOLLET ORIGINAL CODE**

II..... **TECHNICAL INFOR**

III..... **DAEDLENGTH COLLET**

IV..... **GUIDE BUSHING**

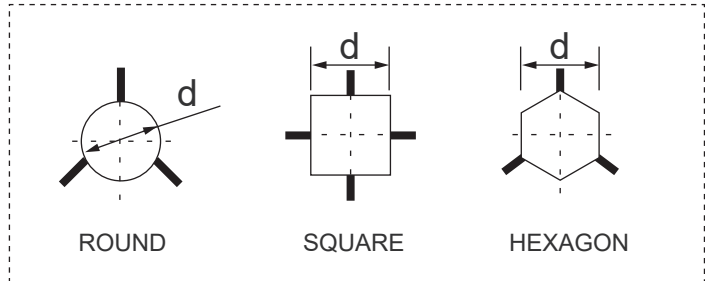
V..... **PRECOLLET TOOL FOR MACHINE MANUFATURER**

CITIZEN(CINCOM)
TSUGAMI
STAR
TORNOS
HANWHA
JINN FA
MIYANO
NOMURA
KSI
METHODS
MAIER
EGUGO
INDEX
LI CO
CHIAH CHYUN
RIKEN
TAKAMAZ

VI..... **HELPFUL BLANK PRINTS**

Extended Nose
Step Bore
Overgrip Bore
Tapered Bore

HOW TO USE PRECOLLET CODE



Part No.P2535

OPTION

SIZE

P2535 S R - L10 K - 5.2

S:STEEL
C:CARBIDE
P:PVC

R:ROUND
S:SQUARE
H:HEXAGON

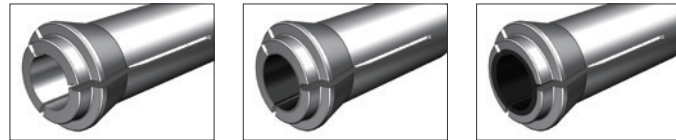
L/SL:Taper/Straight extended nose

P:High precision
K:Rubber sealed
HK:Half Rubber sealed
CL:Extra carbide
(ex.CL40,extension carbide length to 40mm)
OG:Overgrip
(ex.OG5 Land clamping length=5mm after jumping)

SB/GB:Smooth bore/Groove bore
SL/VL:S Slot/V-Slot
KC/KG:Key on cone/Key on Guiding
AR:Axial & Radial groove
SP:Super powerful groove

Bore Material

Plastic-inserted collets and bushings are now available for those parts that require minimal scratching



Steel

Carbide

PVC

Bore Configurations



Round

Square

Hexagon



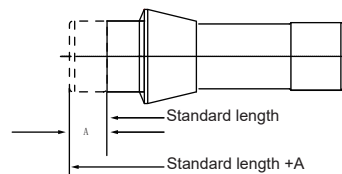
Rectangular

Profile

Radius/Chamfer/
Relief

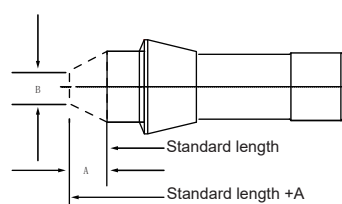
Extention Nose

Extended-nose collets and bushings are used when clearance or reach becomes an issue. Since everyone's needs are specific, there is no standard extension. We recommend that when ordering, you order the extension as short as possible to suit your needs. If you are having the extended portion of the collet or bushing tapered, you can either specify to what diameter you want it tapered, or you can go with the standard that we have established. However, in either case, you must specify that you want the nose tapered.



Straight nose

"A" must be given when collet is ordered.



Taper nose

"A" must be given when collet is ordered. and give "B" if you have specific requirement or go with our standard.

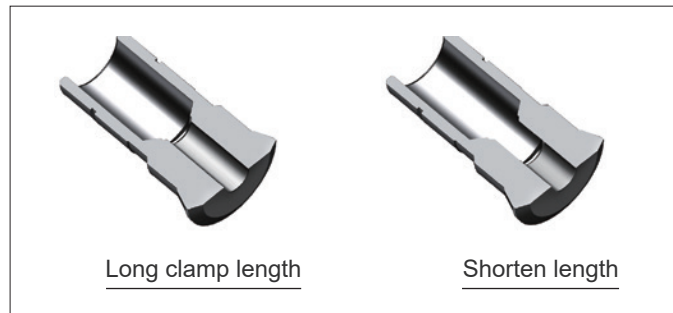
Long clamp length & Shorten length

Long clamp length :

- 1.Provides protection for working in multiple grooves.
- 2.Can encompass more, resulting in greater clamping force.
- 3.Provides more stable clamping for long workpieces.

Shorten length:

- 1.Used for workpieces where clamping injury is not allowed in the rear part.
- 2.Reduces the depth of through holes for short workpieces, allowing the ejector to be closer to the collet, making the clamping diameter more precise.

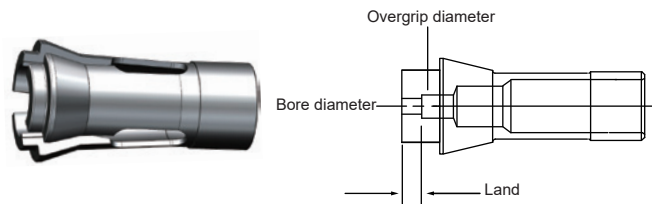


Overgrip collet:Single & Double

Overgrip collets are utilized when the collet must expand to clear a larger diameter and then grip a smaller diameter behind that larger diameter.

Example: The threads of a screw measure 7.5mm, and the shank of the screw between the threads and the head measures 7.0mm. When inserting the screw "thread end first" into the sub-spindle collet, the collet must open enough to clear the 7.5mm threads and then grip the 7.0mm shank. Because the shank has a fixed length, the 7.0mm bore of the collet must be assigned a specific length, referred to as the "LAND."

Due to the machine's limited stroke for opening and closing a collet, you may need to contact the machine manufacturer to confirm if your specific application is feasible.



When Ordering:

Please specify how long the grip diameter needs to be..

Extra Carbide length

The Table below is only a basic theoretical max carbide lined length, and the actual situation needs to be determined based on different models and diameter..

Bore size(mm)	Standard carbide lined length(mm)	Max carbide lined length(mm)
$\Phi < 0.8$	OA	
$0.8 \leq \Phi \leq 1$	5.7	OA
$1 < \Phi \leq 1.5$	2	6
$1.5 < \Phi \leq 2$	5	15
$2 < \Phi \leq 3$	7	21
$3 < \Phi \leq 5$	10	30
$5 < \Phi \leq 8$	11	33
$8 < \Phi \leq 10$	13	39
$10 < \Phi \leq 14$	14	42
$14 < \Phi \leq 17$	16	OA
$17 < \Phi \leq 20$	18	OA
$20 < \Phi \leq 23$	22	OA
$23 < \Phi \leq 24$	24	OA
$24 < \Phi \leq 32$	25	OA



**Axial & Radial groove
Super powerful groove**

Axial & Radial groove

Higher clamping force compared to the grooved standard collet due to the additional axial grooves

Super powerful groove

Highest clamping force at the same clamping pressure of the machine due to very closely spaced axial grooves



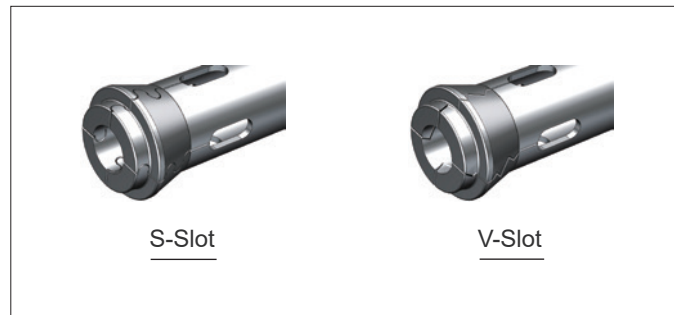
Speical Slot

S-SLOT

Option to modify standard straight slits into Spiral (wave-shaped) slits. Straight slits in round collet chucks and guide bushes may cause trouble when processing square or hexagonal material as the corners of the material will get into the slits. With Spiral slits, you can prevent the corners of the work from getting into slits. This option is also applied for chucking round material as it can reduce the invasion of chips.

V-SLOT

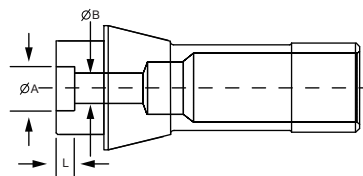
High and constant clamping force
Clamping with virtually no clamping marks
Alternatively usable for profile material (corner clamping)
Prevents the entry of machining chips, as the collet closes almost completely
Easy to clean after use.



Step Collet

Step bore collets are used when the collet must hold 2 or more different diameters of a given part.

EXAMPLE: A part has a diameter of 6.35mm for 3.8 in length, then steps down to 5.08mm. You are inserting the 5.08mm diameter into the sub spindle first and you need to grip both the 5.08 and the 6.35 diameters. The collet would have both bores in it, the 6.35 at the face of the collet and into the collet for a length of 3.8. The 5.08 bore behind the 6.35 bore would run into the backbore of the collet.



Step

When ordering, please specify Step bore collet and supply the following information:

- Bore diameter(A)
- Depth of bore(L)
- Thru bore diameter(B)

Tapered Bore Collet



For gripping conical workpieces, the taper angle of the collet is precisely adapted to the workpiece

Eccentric Bore Collet



1. Eccentric bore can be eroded individually according to application
2. Through hole or offset hole is possible

PLASTIC COLLETS AND BUSHINGS

Advantages

1. High scratch-free surface on the turning parts
2. Very low coefficient of friction, thus ensuring very good sliding properties of the polymer
3. Concentricity accuracy is the same as what the user is used to by a guide bush
4. Polymer is not heat sensitive
5. Polymer is non-abrasive

Plastic inserted or all-plastic collets and bushings are now available for those parts that require minimal scratching.



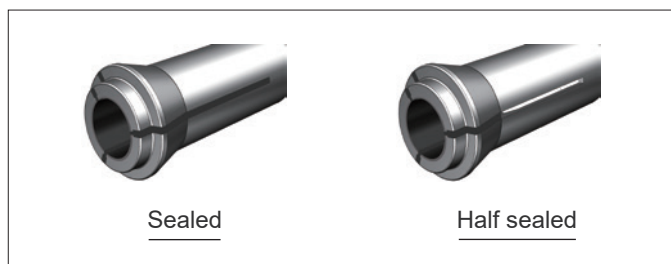
EMERGENCY COLLET



- Is not hardened
- Clamping diameter can be turned out by the user himself.
- Used for the production of prototypes, samples and one-off productions

SEALED/ HALF SEALED

1. Prevents the entry of machining chips
2. The whole slot area can be sealed
3. Resealing possible
4. Not usable with high pressure flushing in the machine



DEADLENGTH COLLET

PRECOLLET®

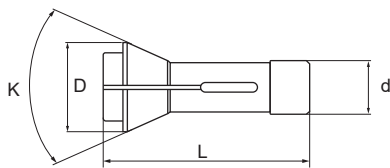


Fig 1

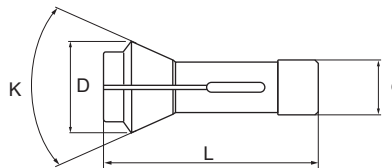


Fig 2

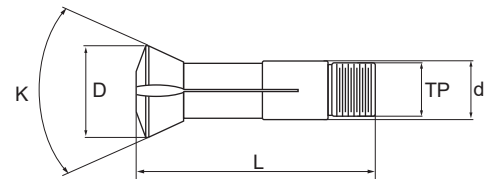


Fig 3

PART NO	Type	DIMENSION					REC.MAX BORE			WORLDWIDE REF.CODE		
		d	D	L	K	TP	Round	Hex	Square	SWISS CODE	US CODE	F.CODE
P0836	Fig 1	8	11.6	36	30°							
P1047	Fig 1	10	16	47	40°		8	7	5.5	109E	TF10	F10 76-86
P1364	Fig 1	13	19.5	64	32°		10	9	7	116E	TF13	F13 76-357
P15455	Fig 1	15	20	45.5	30°		10	8	7			
P1564	Fig 1	15	21	64	32°		13	11	9	120E	TF15	F15 76-580
P1662	Fig 1	16	21	62	32°		12	10	8			
P1664	Fig 1	16	21	64	32°		12	10	8	1212E	TF16	F16 76-1076
P1564	Fig 1	15	21	64	32°		13	11	9	120E	TF15	F15 76-580
P1867T	Fig 1	18	25	67	32°		10.5	11.5	9.5		TF 18	
P2054	Fig 1	20	26	54	30°		16	14.5	12	136 E		F20-201
P2067	Fig 1	20	28	67	32°		16	14	11.5	138E	TF20	F20 76-87
P2255	Fig 1	22	30	55	30°		16	15	12	140E	TF22	F22 76-71
P23862	Fig 1	23.8	28	62	30°		18.5	16	13		TF24	
P2577	Fig 1	25	35	77	32°		21	17.5	14.5	145E	TF25	F25 76-64
P2667	Fig 1	26	36	67	32°		20.5	17	14			
P2877	Fig 1	28	35	77	32°		23	20	16		BS20	
P3078	Fig 1	30	42	78	32°		25	22	18			
P3080	Fig 1	30	42	80	32°		26	22	18	157E	TF30	F30 76-63
P3065	Fig 1	30	38	65	30°		25	22	18	1446 E	0161	F30 76-101
P3275	Fig 1	32	45	75	30°		28	24	29	161E		F32 76-221
P3380	Fig 1	33	40	80	32°		28	24	20		S25-HM	
PA3570	Fig 2	35	43	70	30°		25	22	17			F35 76-67
PA3580	Fig 2	35	48	80	30°					163E		F35 76-94
PA3791	Fig 2	37	44	91	32°		32	27	22			
P3792	Fig 1	37	47	92	32°		32	27	23	EF37/1536E	TF37	F37 76-740
PA3808	Fig 2	38.08	49	108	30°					164E		F38 76-72
P4092	Fig 1	40	50	92	32°		35	30	24		TF40	F40-SL35
PA4294	Fig 2	42	55	94	30°					171E		F42 76-99
P4392	Fig 1	43	53	92	32°		39	33.5	27.5		TF43	
P4492	Fig 1	44	52	92	33°		38	33	27		TF44	F44 76-92
PA4894	Fig 2	48	60	94	30°					173E	TF48	F48 76-81
P4894N	Fig 1	48	60	94	30°		38	33	27		TF48 NFT (0°)	
PA5894	Fig 2	58	70	94	30°					177E		F58 17-355
PA66110	Fig 2	66	84	110	30°					185E		F66 76-59
PA72142	Fig 2	72	90	142	30°					187E		
PA90130	Fig 2	90	107	130	30°					193E		
P3066	Fig 1	30	43	66	30°							
P4884	Fig 1	48	66	84	30°							
P5694	Fig 1	56	68	94	30°							
P75100	Fig 1	75	93	100	30°							
PT3688	Fig 3	36	44	88	20°	M32x1.5						
PT55110	Fig 3	55	66	110	20°	M50x1.5						
PT83132	Fig 3	83	97	132	20°	M78x2.0						
PT25102	Fig 3	25	35	102		M25x1.25						
PT36131	Fig 3	36	52	131		M36x2						
PT37101	Fig 3	37	46	101	30°	M32x1.5						
PT1905	Fig 3	19.05	26	77	30°	M18.5x1.2					BL12	
PT33100	Fig 3	33	41	100	30°	M32*1.5	27	23	19		BL25	

PART NO	Type	DIMENSION					REC.MAX BORE			WORLDWIDE REF.CODE		
		d	D	L	K	TP	Round	Hex	Square			
PT1976	Fig 3	19	26	76	30°	M18.5*1.2	13.5	11	9		EDA-6	
P444108	Fig 1	44.4	54.2	108	30°						BNC34	
PT25102	Fig 3	25	33	102	30°	M24x1.5					EDA-8	
PT37101	Fig 3	32	42	118	30°	M32x1.5					EDA-10	
P12582	Fig 1	12	18	58.2	32°						P853C	
P1650	Fig 1	16	22	50	31°		10	8	7		P10C/P1053C	
P2068	Fig 1	20	26	68	27°10'						P16C/P1653C	
P32835	Fig 1	32	42	83.5	30°20'						P25C/P2553C	
P4285	Fig 1	42	52	85	26°						P30C/NN30TC	

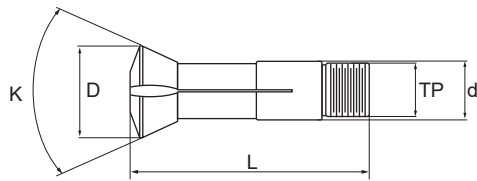


Fig 1

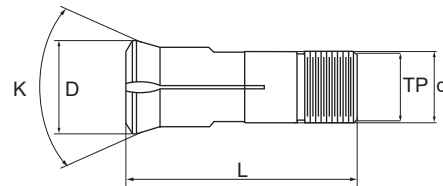
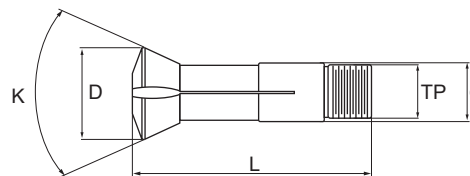
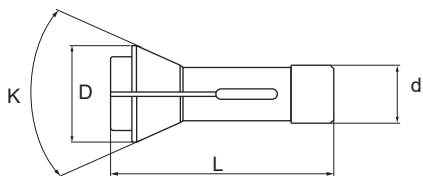


Fig 2

PART NO	Type	DIMENSION					REC.MAX BORE			WORLDWIDE REF.CODE		
		d	D	L	K	TP	Round	Hex	Square	SWISS CODE	US CODE	DIN CODE
PG944	Fig 1	9	12.5	38	32°	M8*0.75	5	4	3			
PG3001	Fig 1	11	14.5	53	32°	M10*0.75	7	5	4	F3001(5.001)	TD7	3133 E
PG354I	Fig 1	15	20	54	32°	M14*1	10	8	7			
PG353I	Fig 1	16	20.5	59	32°	M14*1	10	8	7	I353(8.001)	TD10	3260 E
PG125R	Fig 1	18	22	60	60°	M18*1	13	10	8	171.001	SD125R	3319 E
PG125R2	Fig 1	18	22	60	60°	M16*1	13	10	8		SD125R-16	3320 E
PG221T	Fig 1	21	24	57.5	12°	M18*1	15	11	9	T221(450.001)	SNC15	3438 E
PG391F	Fig 2	22	29	68	32°	M22*1	16	12.5	10	F391(39.001)	TD20R	3455 E
PG20R	Fig 1	23	28	72	32°	M22*1	16	14	11	483.001	TSG20R	
PG0201	Fig 1	24	29.5	61	60°	M 24 x 1	17	14.5	12	F605(61.002)	0201	3507E
PG26TD	Fig 1	26	29	77	32°	M 25 x 1	20	16	13		TD26	
PG25NS	Fig 1	28	34	82	32°	M25*1	20.5	16.5	13.5		TD25NS	
PG223T	Fig 1	28	34	82	32°	M25*1	20.5	17	14	T223(22.001)	TD25S	3602 E
PG25T	Fig 1	28	38	81	60°	M 25 x 1	21	17	14	I357(18.001)	TD25	3610 E
PG230B	Fig 1	30	35	59	32°	M30*1	23	19	16	FB230(510.001)		
PG20HB	Fig 1	30	36	70	32°	M28*1	23	17	14	486.001	S20HGB	
PG20D	Fig 1	32	39.8	71	60°	M 32 x 1	22	19	16	F355(282.001)	TSD20	3708 E
PG227T	Fig 1	34	41	87.5	20°	M34*1	26	22.5	18	T227(451.001)	CD25	3733 E
PG227T2	Fig 1	34	41	87.5	32°	M34*1	26	22.5	18			
PG4182	Fig 1	41	46	82	20°	M38x1	32	27	22			
PG32T	Fig 1	42	48	82	41°	M40*1	32	27.5	22.5		TD32	
PG229T	Fig 1	42	49	82	32°	M40*1	32	27.5	22.5	T229(28.001)	TD32S	3827 E
PG245T	Fig 1	45	52	82	32°	M42*1	35	30	25	T245(250.001)	TD45	
PG38SL	Fig 1	46	53	82	32°		38	32	26	SL38	H38D	
PG246T	Fig 1	46	53	92	32°	M45*1	38	32	26	T246(467.001)	TD38	
PG249T	Fig 1	48	54	81	20°	M46*1	38	33	27	T249(496.001)		
PG248T	Fig 1	48	54	82	32°	M46*1	38	33	27	T248(464.001)	STM38	

PART NO	Type	DIMENSION					REC.MAX BORE			WORLDWIDE REF.CODE
		d	D	L	K	TP	Round	Hex	Square	
PG853D	Fig 1	14	20	61.5	31°	M14*1	8.5	7	6	P853D
PG10D	Fig 1	16	20	63	31°	M14*1	10	8	7	P10D/P1053D
PG16D	Fig 1	22	26	70	30°	M20*1	15.5	13	11	P16D/P1653D
PG20D	Fig 1	30	35.2	67.5	32°	M30*1	22	19	16	P20D/NN20KD
PG25D	Fig 1	36	44	89.5	27°10'	M36*1	25	21	18	P25D/P2553D
PG30D	Fig 1	44	50	90	26°	M40x1	33	28	23	P30D/NN30TD

CITIZEN(CINCOM)



B12/L12/A12/K12/F12/M12/C12

Part No	TYPE	DIMENSION					REC.MAX BORE			WORLDWIDE REF.CODE		
		d	D	L	K	TP	Round	Hex	Square	SWISS CODE	US CODE	F. CODE
P1662	HEADSTOCK	16	21	62	32°		12	10	8			
P1662	SUB	16	21	62	32°		12	10	8			
PG125R	GUIDEBUSH	18	22	60	60°	M18*1	13	10	8	171.001	SD125R	

K16/M16/M116/A16/B16E/C16

Part No	TYPE	DIMENSION					REC.MAX BORE			WORLDWIDE REF.CODE		
		d	D	L	K	TP	Round	Hex	Square	SWISS CODE	US CODE	F. CODE
P2067	HEADSTOCK	20	28	67	32°		16	14	11.5	138E	TF20	F20 76-87
PG391F	GUIDEBUSH	22	29	68	32°	M22*1	16	12.5	10	F391 (39.001)	TD20R	

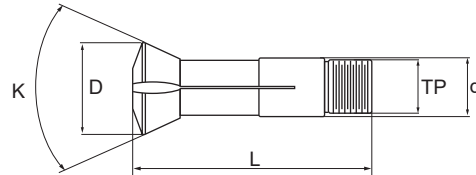
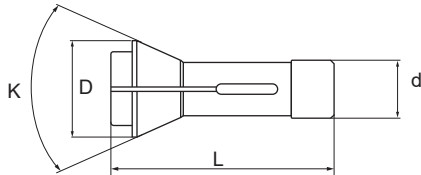
L20/L20E/A20P/M1120/B20/C20/M116/G16/ L16/20 / E16/20 / F16/20

Part No	TYPE	DIMENSION					REC.MAX BORE			WORLDWIDE REF.CODE		
		d	D	L	K	TP	Round	Hex	Square	SWISS CODE	US CODE	F. CODE
P2667	HEADSTOCK	26	36	67	32°		20.5	17	14			
P2667	SUB	26	36	67	32°		20.5	17	14			
PG230B	GUIDEBUSH	30	35	59	32°	M30*1	23	19	16	FB230 (510.001)		

D25/L25/F25/E25

Part No	TYPE	DIMENSION					REC.MAX BORE			WORLDWIDE REF.CODE		
		d	D	L	K	TP	Round	Hex	Square	SWISS CODE	US CODE	F. CODE
P3078	HEADSTOCK	30	42	78	32°		25	22	18			
PG227T	GUIDEBUSH	34	41	87.5	20°	M34*1	26	22.5	18	T227 (451.001)	CD25	

CITIZEN(CINCOM)



L32/M32/E32/A32P/C32

Part No	TYPE	DIMENSION					REC.MAX BORE			WORLDWIDE REF.CODE		
		d	D	L	K	TP	Round	Hex	Square	SWISS CODE	US CODE	F. CODE
P3792	HEADSTOCK	37	47	92	32°		32	27	23	EF37/ 1536E	TF37	F37 76-740
PG32T	GUIDEBUSH	42	48	82	41°	M40*1	32	27.5	22.5		TD32	

R01/R04

Part No	TYPE	DIMENSION					REC.MAX BORE			WORLDWIDE REF.CODE		
		d	D	L	K	TP	Round	Hex	Square	SWISS CODE	US CODE	F. CODE
P830	HEADSTOCK	8	11.6	30	30°							
PG938	GUIDEBUSH	9	12.5	38	32°	M8*0.75	5	4	3			

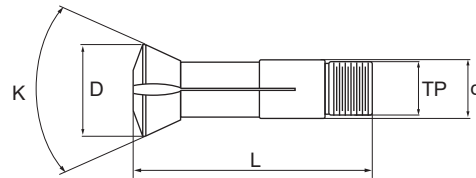
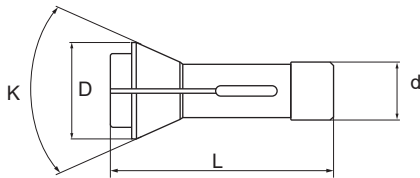
F10/G10/L10/R07

Part No	TYPE	DIMENSION					REC.MAX BORE			WORLDWIDE REF.CODE		
		d	D	L	K	TP	Round	Hex	Square	SWISS CODE	US CODE	F. CODE
P15455	HEADSTOCK	15	20	45.5	30°		10	8	7			
P15455	SUB	15	20	45.5	30°		10	8	7			
PG353I	GUIDEBUSH	16	20.5	59	32°	M14*1	10	8	7	I353 (8.001)	TD10	

BL12(RL01)

Part No	TYPE	DIMENSION					REC.MAX BORE			WORLDWIDE REF.CODE		
		d	D	L	K	TP	Round	Hex	Square	SWISS CODE	US CODE	F. CODE
PT1905	HEADSTOCK	19.05	26	77	30°	M18.5x1.2					BL12	
P1662	SUB	16	21	62	32°		5	4	3			

CITIZEN(CINCOM)



K16C

Part No	TYPE	DIMENSION					REC.MAX BORE			WORLDWIDE REF.CODE		
		d	D	L	K	TP	Round	Hex	Square	SWISS CODE	US CODE	F. CODE
P2067	SUB	20	28	67	32°		16	14	11.5	138E	TF20	F20 76-87

A20C/BL20

Part No	TYPE	DIMENSION					REC.MAX BORE			WORLDWIDE REF.CODE		
		d	D	L	K	TP	Round	Hex	Square	SWISS CODE	US CODE	F. CODE
PT33100	HEADSTOCK	33	41	100	30°	M32*1.5	27	23	19		BL25	
P2667	SUB	26	36	67	30°		20.5	17	14			

BL25

Part No	TYPE	DIMENSION					REC.MAX BORE			WORLDWIDE REF.CODE		
		d	D	L	K	TP	Round	Hex	Square	SWISS CODE	US CODE	F. CODE
PT33100	HEADSTOCK	33	41	100	30°	M32*1.5	27	23	19		BL25	
P3078	HEADSTOCK	30	42	78	32°		25	22	18			

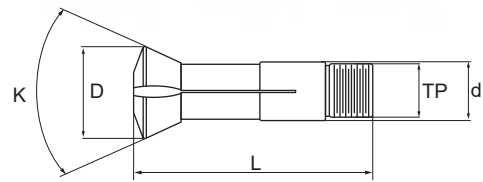
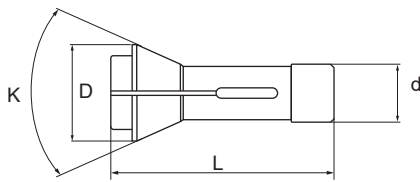
L32

Part No	TYPE	DIMENSION					REC.MAX BORE			WORLDWIDE REF.CODE		
		d	D	L	K	TP	Round	Hex	Square	SWISS CODE	US CODE	F. CODE
P4894N	HEADSTOCK	48	60	94	30°		38	33	27	TF48 NFT (0°)		
PG248T	GUIDEBUSH	48	54	82	32°	M46*1	38	33	27	T248 (464.001)	STM38	

FL42/EL42/GL30

Part No	TYPE	DIMENSION					REC.MAX BORE			WORLDWIDE REF.CODE		
		d	D	L	K	TP	Round	Hex	Square	SWISS CODE	US CODE	F. CODE
P4894N	HEADSTOCK	48	60	94	30°		38	33	27	TF48 NFT (0°)		

TSUAGMI



T7/B007

Part No	TYPE	DIMENSION					REC.MAX BORE			WORLDWIDE REF.CODE		
		d	D	L	K	TP	Round	Hex	Square	SWISS CODE	US CODE	F. CODE
P1047	HEADSTOCK	10	16	47	40°		8	7	5.5	109E	TF10	F10 76-86
PG3001	GUIDEBUSH	11	14.5	53	32°	M10*0.75	7	5	4	F3001 (5.001)	TD7	

NP11/NT11

Part No	TYPE	DIMENSION					REC.MAX BORE			WORLDWIDE REF.CODE		
		d	D	L	K	TP	Round	Hex	Square	SWISS CODE	US CODE	F. CODE
P1448	HEADSTOCK	14	20	48	41°		10	8	7			
PG354I	GUIDEBUSH	15	20	54	32°	M14*1	10	8	7			

B012/BS12/NP17/NT17/BE12/S16P

Part No	TYPE	DIMENSION					REC.MAX BORE			WORLDWIDE REF.CODE		
		d	D	L	K	TP	Round	Hex	Square	SWISS CODE	US CODE	F. CODE
P23862	HEADSTOCK	23.8	28	62	30°		18.5	16	13		TF24	
PG20R	GUIDEBUSH	23	28	72	32°	M22*1	16	14	11	483.001	TSG20R	

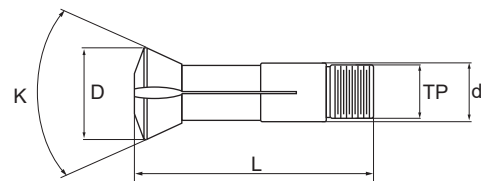
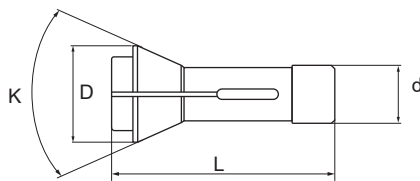
BM16

Part No	TYPE	DIMENSION					REC.MAX BORE			WORLDWIDE REF.CODE		
		d	D	L	K	TP	Round	Hex	Square	SWISS CODE	US CODE	F. CODE
P3075	HEADSTOCK	30	38	75	30°	M25X1.5	22.5	19	16			
P23862	SUB	23.8	28	62	30°		18.5	16	13		TF24	

BS18/B018/S20

Part No	TYPE	DIMENSION					REC.MAX BORE			WORLDWIDE REF.CODE		
		d	D	L	K	TP	Round	Hex	Square	SWISS CODE	US CODE	F. CODE
P2877	HEADSTOCK	28	35	77	32°		23	20	16		BS20	
P23862	SUB	23.8	28	62	30°		18.5	16	13		TF24	
PG20HB	GUIDEBUSH	30	36	70	32°	M28*1	23	17	14	486.001	S20HGB	

TSUAGMI



BS20/B020/BE20/BW20

Part No	TYPE	DIMENSION					REC.MAX BORE			WORLDWIDE REF.CODE		
		d	D	L	K	TP	Round	Hex	Square	SWISS CODE	US CODE	F. CODE
P2877	HEADSTOCK	28	35	77	32°		23	20	16		BS20	
P2577	SUB	25	35	77	32°		21	17.5	14.5	145E	TF25	F25 76-64
PG20HB	GUIDEBUSH	30	36	70	32°	M28*1	23	17	14	486.001	S20HGB	

B026/BS26/SS26

Part No	TYPE	DIMENSION					REC.MAX BORE			WORLDWIDE REF.CODE		
		d	D	L	K	TP	Round	Hex	Square	SWISS CODE	US CODE	F. CODE
P3380	HEADSTOCK	33	40	80	32°		28	24	20		S25-HM	
P3380	SUB	33	40	80	32°		28	24	20		S25-HM	
PG227T2	GUIDEBUSH	34	41	87.5	32°	M34*1	26	22.5	18			

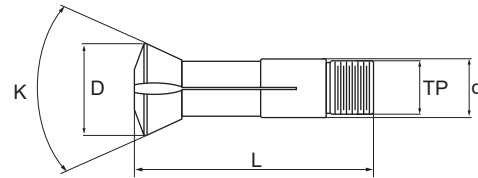
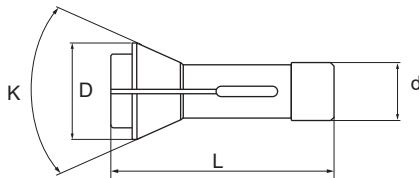
B032/BS32/SS32

Part No	TYPE	DIMENSION					REC.MAX BORE			WORLDWIDE REF.CODE		
		d	D	L	K	TP	Round	Hex	Square	SWISS CODE	US CODE	F. CODE
PA3791	HEADSTOCK	37	44	91	32°		32	27	22			
PA3791	SUB	37	44	91	32°		32	27	22			
PG4182	GUIDEBUSH	41	46	82	20°	M38x1	32	27	22			

B038

Part No	TYPE	DIMENSION					REC.MAX BORE			WORLDWIDE REF.CODE		
		d	D	L	K	TP	Round	Hex	Square	SWISS CODE	US CODE	F. CODE
P4392	HEADSTOCK	43	53	92	32°		39	33.5	27.5		TF43	
P48100	SUB	48	54	100	32°		41	35	29	BS38	BS38	F48/38
PG249T	GUIDEBUSH	48	54	81	20°	M46*1	38	33	27	T249 (496.001)		

STAR



SR-10J

Part No	TYPE	DIMENSION					REC.MAX BORE			WORLDWIDE REF.CODE		
		d	D	L	K	TP	Round	Hex	Square	SWISS CODE	US CODE	F. CODE
P1662	HEADSTOCK	16	21	62	32°		12	10	8			
PG353I	GUIDEBUSH	16	20.5	59	32°	M14*1	10	8	7	I353 (8.001)	TD10	

JNC-10

Part No	TYPE	DIMENSION					REC.MAX BORE			WORLDWIDE REF.CODE		
		d	D	L	K	TP	Round	Hex	Square	SWISS CODE	US CODE	F. CODE
P1564	HEADSTOCK	15	21	64	32°		13	11	9	120E	TF15	F15 76-580
PG353I	GUIDEBUSH	16	20.5	59	32°	M14*1	12	9	7	I353 (8.001)	TD10	

S-13 VNC-12 SNC-15 JNC-16 RNC-16 SI-12

Part No	TYPE	DIMENSION					REC.MAX BORE			WORLDWIDE REF.CODE		
		d	D	L	K	TP	Round	Hex	Square	SWISS CODE	US CODE	F. CODE
P1867T	HEADSTOCK	18	25	67	32°		10.5	11.5	9.5		TF 18	
PG221T	GUIDEBUSH	21	24	57.5	12°	M18*1	15	11	9	T221 (450.001)	SNC15	

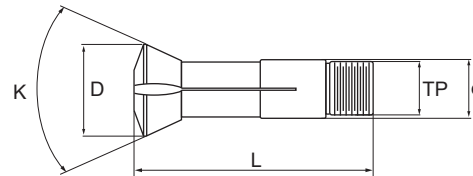
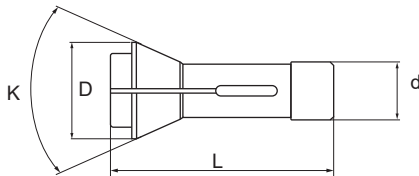
SB-12 SW-12 SH-12 SE-12

Part No	TYPE	DIMENSION					REC.MAX BORE			WORLDWIDE REF.CODE		
		d	D	L	K	TP	Round	Hex	Square	SWISS CODE	US CODE	F. CODE
P2067	HEADSTOCK	20	28	67	32°		16	14	11.5	138E	TF20	F20 76-87
PG221T	GUIDEBUSH	21	24	57.5	12°	M18*1	15	11	9	T221 (450.001)	SNC15	

SB-16 SR-16/16R KJR-16 SH-16 SA-16R

Part No	TYPE	DIMENSION					REC.MAX BORE			WORLDWIDE REF.CODE		
		d	D	L	K	TP	Round	Hex	Square	SWISS CODE	US CODE	F. CODE
P2067	HEADSTOCK	20	28	67	32°		16	14	11.5	138E	TF20	F20 76-87
PG391F	GUIDEBUSH	22	29	68	32°	M22*1	16	12.5	10	F391 (39.001)	TD20R	

STAR



SR-20 SV-20 ST-20 SW-20 SB-20 VNC-20

Part No	TYPE	DIMENSION					REC.MAX BORE			WORLDWIDE REF.CODE		
		d	D	L	K	TP	Round	Hex	Square	SWISS CODE	US CODE	F. CODE
P2667	HEADSTOCK	26	36	67	32°		20.5	17	14			
P2667	SUB	26	36	67	32°		20.5	17	14			
PG230B	GUIDEBUSH	30	35	59	32°	M30*1	23	19	16	FB230 (510.001)		

SR23

Part No	TYPE	DIMENSION					REC.MAX BORE			WORLDWIDE REF.CODE		
		d	D	L	K	TP	Round	Hex	Square	SWISS CODE	US CODE	F. CODE
P2877	HEADSTOCK	28	35	77	32°		23	20	16		BS20	F30 76-63
PG230B	GUIDEBUSH	30	35	59	32°	M30*1	23	19	16	FB230 (510.001)		

SC-20 KJR25/25B

Part No	TYPE	DIMENSION					REC.MAX BORE			WORLDWIDE REF.CODE		
		d	D	L	K	TP	Round	Hex	Square	SWISS CODE	US CODE	F. CODE
P3080	HEADSTOCK	30	42	80	32°		26	22	18	157E	TF30	F30 76-63
P2667	SUB	26	36	67	32°		20.5	17	14			

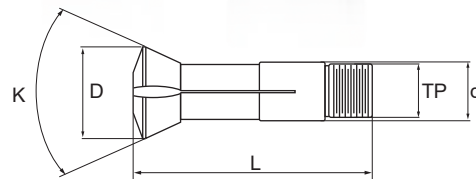
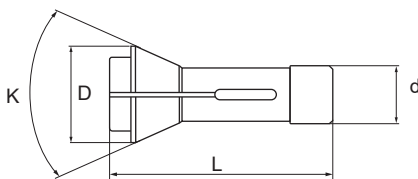
SR-32 VNC-32 KNC-32 STM-32 SV-32J II

Part No	TYPE	DIMENSION					REC.MAX BORE			WORLDWIDE REF.CODE		
		d	D	L	K	TP	Round	Hex	Square	SWISS CODE	US CODE	F. CODE
P3792	HEADSTOCK	37	47	92	32°		32	27	23	EF37/ 1536E	TF37	F37 76-740
PG229T	GUIDEBUSH	42	49	82	32°	M40*1	32	27.5	22.5	T229 (28.001)	TD32S	

SR-38 SV-38R ST-38 SX-38 SG-42

Part No	TYPE	DIMENSION					REC.MAX BORE			WORLDWIDE REF.CODE		
		d	D	L	K	TP	Round	Hex	Square	SWISS CODE	US CODE	F. CODE
P4894N	HEADSTOCK	48	60	94	30°		38	33	27	TF48 NFT (0°)		
PG248T	GUIDEBUSH	48	54	82	32°	M46*1	38	33	27	T248 (464.001)	STM38	

TORNOS



DECO 2000 10,ENC74

Part No	TYPE	DIMENSION					REC.MAX BORE			WORLDWIDE REF.CODE		
		d	D	L	K	TP	Round	Hex	Square	SWISS CODE	US CODE	F. CODE
P1364	HEADSTOCK	13	19.5	64	32°		10	9	7	116E	TF13	F13 76-357
P1364	SUB	13	19.5	64	32°		10	9	7	116E	TF13	F13 76-357
PG353I	GUIDEBUSH	16	20.5	59	32°	M14*1	10	8	7	I353(8.001)	TD10	

ENC16 DECO2000 13/16

Part No	TYPE	DIMENSION					REC.MAX BORE			WORLDWIDE REF.CODE		
		d	D	L	K	TP	Round	Hex	Square	SWISS CODE	US CODE	F. CODE
P2054	HEADSTOCK	20	26	54	30°		16	14.5	12	136E		F20-201
P2054	SUB	20	26	54	30°		16	14.5	12	136E		F20-201
PG0201	GUIDEBUSH	24	29.5	61	60°	M24 x 1	17	14.5	12	F605(61.002)	0201	

Elector16

Part No	TYPE	DIMENSION					REC.MAX BORE			WORLDWIDE REF.CODE		
		d	D	L	K	TP	Round	Hex	Square	SWISS CODE	US CODE	F. CODE
P2054	HEADSTOCK	20	26	54	30°		16	14.5	12	136E		F20-201
PG0201	GUIDEBUSH	24	29.5	61	60°	M24 x 1	17	14.5	12	F605(61.002)	0201	

ENC164

Part No	TYPE	DIMENSION					REC.MAX BORE			WORLDWIDE REF.CODE		
		d	D	L	K	TP	Round	Hex	Square	SWISS CODE	US CODE	F. CODE
P1564	HEADSTOCK	15	21	64	32°		13	11	9	120E	TF15	F15 76-580
P1564	SUB	15	21	64	32°		13	11	9	120E	TF15	F15 76-580
PG0201	GUIDEBUSH	24	29.5	61	60°	M24 x 1	17	14.5	12	F605(61.002)	0201	

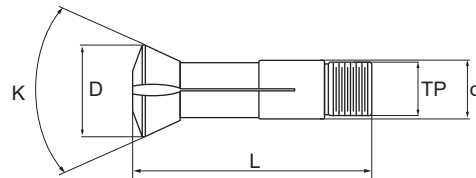
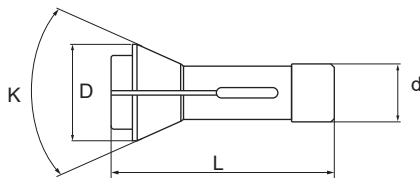
ENC162

Part No	TYPE	DIMENSION					REC.MAX BORE			WORLDWIDE REF.CODE		
		d	D	L	K	TP	Round	Hex	Square	SWISS CODE	US CODE	F. CODE
P1564	HEADSTOCK	15	21	64	32°		13	11	9	120E	TF15	F15 76-580
PG0201	GUIDEBUSH	24	29.5	61	60°	M24 x 1	17	14.5	12	F605(61.002)	0201	

TOP-100

Part No	TYPE	DIMENSION					REC.MAX BORE			WORLDWIDE REF.CODE		
		d	D	L	K	TP	Round	Hex	Square	SWISS CODE	US CODE	F. CODE
P1664	HEADSTOCK	16	21	64	32°		12	10	8	1212E	TF16	F16 76-1076
P1664	SUB	16	21	64	32°		12	10	8	1212E	TF16	F16 76-1076

TORNOS



R125

Part No	TYPE	DIMENSION					REC.MAX BORE			WORLDWIDE REF.CODE		
		d	D	L	K	TP	Round	Hex	Square	SWISS CODE	US CODE	F. CODE
P1664	HEADSTOCK	16	21	64	32°		12	10	8	1212E	TF16	F16 76-1076
PG353I	GUIDEBUSH	16	20.5	59	32°	M14*1	10	8	7	I353(8.001)	TD10	

R10 M10

Part No	TYPE	DIMENSION					REC.MAX BORE			WORLDWIDE REF.CODE		
		d	D	L	K	TP	Round	Hex	Square	SWISS CODE	US CODE	F. CODE
P1564	HEADSTOCK	15	21	64	32°		13	11	9	120E	TF15	F15 76-580
PG353I	GUIDEBUSH	16	20.5	59	32°	M14*1	10	8	7	I353(8.001)	TD10	

DECO-7

Part No	TYPE	DIMENSION					REC.MAX BORE			WORLDWIDE REF.CODE		
		d	D	L	K	TP	Round	Hex	Square	SWISS CODE	US CODE	F. CODE
P1047	HEADSTOCK	10	16	47	40°		8	7	5.5	109E	TF10	F10 76-86
P1047	SUB	10	16	47	40°		8	7	5.5	109E	TF10	F10 76-86
PG3001	GUIDEBUSH	11	14.5	53	32°	M10*0.75	7	5	4	F3001(5.001)	TD7	

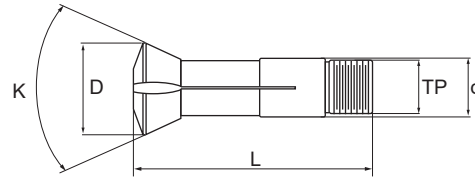
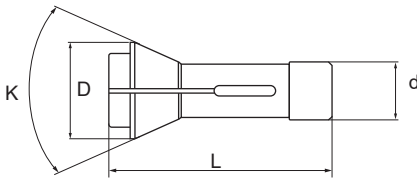
TOP200 ENC262 ENC264

Part No	TYPE	DIMENSION					REC.MAX BORE			WORLDWIDE REF.CODE		
		d	D	L	K	TP	Round	Hex	Square	SWISS CODE	US CODE	F. CODE
P3065	HEADSTOCK	30	38	65	30°		25	22	18	1446 E	0161	F30 76-101
P2577	SUB	25	35	77	32°		21	17.5	14.5	145E	TF25	F25 76-64

EVODECO 16A

Part No	TYPE	DIMENSION					REC.MAX BORE			WORLDWIDE REF.CODE		
		d	D	L	K	TP	Round	Hex	Square	SWISS CODE	US CODE	F. CODE
P2054	HEADSTOCK	20	26	54	30°		16	14.5	12	136E		F20-201
P2067	SUB	20	28	67	32°		16	14	11.5	138E	TF20	F20 76-87
PG0201	GUIDEBUSH	24	29.5	61	60°	M24 x 1	17	14.5	12	F605(61.002)	0201	

TORNOS



DECO 2000 1"

Part No	TYPE	DIMENSION					TP	REC.MAX BORE			WORLDWIDE REF.CODE		
		d	D	L	K	Round		Hex	Square	SWISS CODE	US CODE	F. CODE	
P3065	HEADSTOCK	30	38	65	30°		25	22	18	1446 E	0161		
P3065	SUB	30	38	65	30°		25	22	18	1446 E	0161		
PG227T	GUIDEBUSH	34	41	87.5	20°	M34*1	26	22.5	18	T227(451.001)	CD25		

DT26 SIGMA 20

Part No	TYPE	DIMENSION					TP	REC.MAX BORE			WORLDWIDE REF.CODE		
		d	D	L	K	Round		Hex	Square	SWISS CODE	US CODE	F. CODE	
P3065	HEADSTOCK	30	38	65	30°		25	22	18	1446 E	0161		
PG227T	GUIDEBUSH	34	41	87.5	20°	M34*1	26	22.5	18	T227(451.001)	CD25		

DELTA 20/5 M20 R20 RR20

Part No	TYPE	DIMENSION					TP	REC.MAX BORE			WORLDWIDE REF.CODE		
		d	D	L	K	Round		Hex	Square	SWISS CODE	US CODE	F. CODE	
P2577	HEADSTOCK	25	35	77	32°		21	17.5	14.5	145E	TF25	F25 76-64	
PG25T	GUIDEBUSH	28	38	81	60°	M25 x 1	21	17	14	I357(18.001)	TD25		

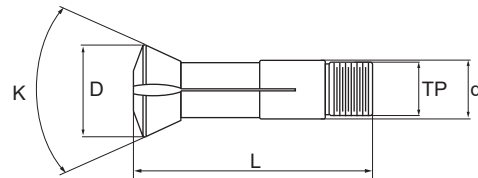
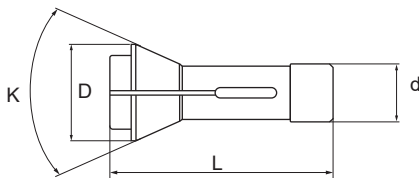
DELTA 20/5 DD

Part No	TYPE	DIMENSION					TP	REC.MAX BORE			WORLDWIDE REF.CODE		
		d	D	L	K	Round		Hex	Square	SWISS CODE	US CODE	F. CODE	
P2577	HEADSTOCK	25	35	77	32°		21	17.5	14.5	145E	TF25	F25 76-64	
PG26TD	GUIDEBUSH	26	29	77	32°	M25 x 1	20	16	13		TD26		

DECO 2000 20MM ENC167

Part No	TYPE	DIMENSION					TP	REC.MAX BORE			WORLDWIDE REF.CODE		
		d	D	L	K	Round		Hex	Square	SWISS CODE	US CODE	F. CODE	
P2577	HEADSTOCK	25	35	77	32°		21	17.5	14.5	145E	TF25	F25 76-64	
P2577	SUB	25	35	77	32°		21	17.5	14.5	145E	TF25	F25 76-64	
PG25T	GUIDEBUSH	28	38	81	60°	M25 x 1	21	17	14	I357(18.001)	TD25		

TORNOS



GT32

Part No	TYPE	DIMENSION					REC.MAX BORE			WORLDWIDE REF.CODE		
		d	D	L	K	TP	Round	Hex	Square	SWISS CODE	US CODE	F. CODE
P3792	HEADSTOCK	37	47	92	32°		32	27	23	EF37/1536E	TF37	F37 76-740
PG229T	GUIDEBUSH	42	49	82	32°	M40*1	32	27.5	22.5	T229(28.001)	TD32S	

DECO 2000 26/32

Part No	TYPE	DIMENSION					REC.MAX BORE			WORLDWIDE REF.CODE		
		d	D	L	K	TP	Round	Hex	Square	SWISS CODE	US CODE	F. CODE
P3792	HEADSTOCK	37	47	92	32°		32	27	23	EF37/1536E	TF37	F37 76-740
P3792	SUB COLLET	37	47	92	32°		32	27	23	EF37/1536E	TF37	F37 76-740
PG229T	GUIDEBUSH	42	49	82	32°	M40*1	32	27.5	22.5	T229(28.001)	TD32S	

MR32

Part No	TYPE	DIMENSION					REC.MAX BORE			WORLDWIDE REF.CODE		
		d	D	L	K	TP	Round	Hex	Square	SWISS CODE	US CODE	F. CODE
P3792	HEADSTOCK	37	47	92	32°		32	27	23	EF37/1536E	TF37	F37 76-740
PG32T	GUIDEBUSH	42	48	82	41°	M40*1	32	27.5	22.5		TD32	

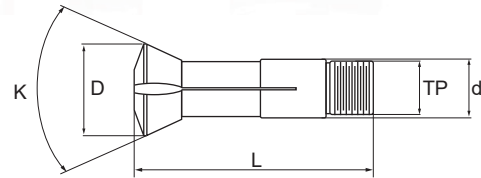
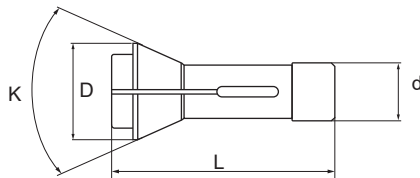
DELTA 20

Part No	TYPE	DIMENSION					REC.MAX BORE			WORLDWIDE REF.CODE		
		d	D	L	K	TP	Round	Hex	Square	SWISS CODE	US CODE	F. CODE
P23862	HEADSTOCK	23.8	28	62	30°		18.5	16	13		TF24	
PG26TD	GUIDEBUSH	26	29	77	32°	M25 x 1	20	16	13		TD26	

DELTA 12/5

Part No	TYPE	DIMENSION					REC.MAX BORE			WORLDWIDE REF.CODE		
		d	D	L	K	TP	Round	Hex	Square	SWISS CODE	US CODE	F. CODE
P2054	HEADSTOCK	20	26	54	30°		16	14.5	12	136E		F20-201
PG26TD	GUIDEBUSH	26	29	77	32°	M25 x 1	20	16	13		TD26	

HANWHA



XD12 III XE12 XP12 XD10 ML12S SL12S/H SL12S SL12SE XP12S XD12H

Part No	TYPE	DIMENSION					REC.MAX BORE			WORLDWIDE REF.CODE		
		d	D	L	K	TP	Round	Hex	Square	SWISS CODE	US CODE	F. CODE
P1664	HEADSTOCK	16	21	64	32°		12	10	8	1212E	TF16	F16 76-1076
P1664	SUB	16	21	64	32°		12	10	8	1212E	TF16	F16 76-1076
PG125R	GUIDEBUSH	18	22	60	60°	M18*1	13	10	8	171.001	SD125R	

XD12 III / XE12 / XP12 (Europe), XD10 (Europe)

Part No	TYPE	DIMENSION					REC.MAX BORE			WORLDWIDE REF.CODE		
		d	D	L	K	TP	Round	Hex	Square	SWISS CODE	US CODE	F. CODE
P1564	HEADSTOCK	15	21	64	32°		13	11	9	120E	TF15	F15 76-580
P1564	SUB	15	21	64	32°		13	11	9	120E	TF15	F15 76-580
PG125R2	GUIDEBUSH	18	22	60	60°	M16*1	13	10	8		SD125R-16	

XD16 III XE16 XP16 SL16

Part No	TYPE	DIMENSION					REC.MAX BORE			WORLDWIDE REF.CODE		
		d	D	L	K	TP	Round	Hex	Square	SWISS CODE	US CODE	F. CODE
P2255	HEADSTOCK	22	30	55	30°		16	15	12	140E	TF22	F22 76-71
P2255	SUB	22	30	55	30°		16	15	12	140E	TF22	F22 76-71
PG391F	GUIDEBUSH	22	29	68	32°	M22*1	16	12.5	10	F391(39.001)	TD20R	

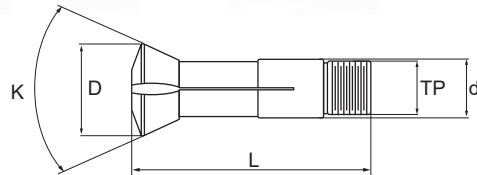
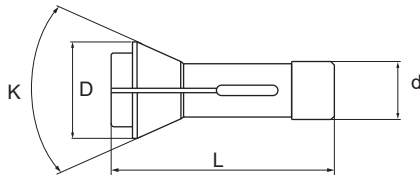
XD20 II XE20 XP20S XD20V XP20 SL20H SL20HP SL20S

Part No	TYPE	DIMENSION					REC.MAX BORE			WORLDWIDE REF.CODE		
		d	D	L	K	TP	Round	Hex	Square	SWISS CODE	US CODE	F. CODE
P2577	HEADSTOCK	25	35	77	32°		21	17.5	14.5	145E	TF25	F25 76-64
P2577	SUB	25	35	77	32°		21	17.5	14.5	145E	TF25	F25 76-64
PG25NS	GUIDEBUSH	28	34	82	32°		20.5	16.5	13.5		TD25NS	

HANEX25 ML26H ML26S SL26H SL26HP SL26S XD26H

Part No	TYPE	DIMENSION					REC.MAX BORE			WORLDWIDE REF.CODE		
		d	D	L	K	TP	Round	Hex	Square	SWISS CODE	US CODE	F. CODE
P3080	HEADSTOCK	30	42	80	32°		26	22	18	157E	TF30	F30 76-63
P3080	SUB	30	42	80	32°		26	22	18	157E	TF30	F30 76-63
PG227T	GUIDEBUSH	34	41	87.5	20°	M34*1	26	22.5	18	T227(451.001)	CD25	

HANWHA



XD26 II /XE26 /XP26, XDI26

Part No	TYPE	DIMENSION					REC.MAX BORE			WORLDWIDE REF.CODE		
		d	D	L	K	TP	Round	Hex	Square	SWISS CODE	US CODE	F. CODE
P3245	HEADSTOCK	32	75	45	30°		28	24	19	161E		F32 76-221
P3245	SUB	32	75	45	30°		28	24	19	161E		F32 76-221
PG227T	GUIDEBUSH	34	41	87.5	20°	M34*1	26	22.5	18	T227(451.001)	CD25	

XD32

Part No	TYPE	DIMENSION					REC.MAX BORE			WORLDWIDE REF.CODE		
		d	D	L	K	TP	Round	Hex	Square	SWISS CODE	US CODE	F. CODE
P3792	HEADSTOCK	37	47	92	32°		32	27	23	EF37/1536E	TF37	F37 76-740
P3792	SUB	37	47	92	32°		32	27	23	EF37/1536E	TF37	F37 76-740
PG227T	GUIDEBUSH	34	41	87.5	20°	M34*1	26	22.5	18	T227(451.001)	CD25	

XD32 II STL32 (S) XP32 SL32HP STL32H XD32H

Part No	TYPE	DIMENSION					REC.MAX BORE			WORLDWIDE REF.CODE		
		d	D	L	K	TP	Round	Hex	Square	SWISS CODE	US CODE	F. CODE
P3792	HEADSTOCK	37	47	92	32°		32	27	23	EF37/1536E	TF37	F37 76-740
P3792	SUB	37	47	92	32°		32	27	23	EF37/1536E	TF37	F37 76-740
PG229T	GUIDEBUSH	42	49	82	32°	M40*1	32	27.5	22.5	T229(28.001)	TD32S	

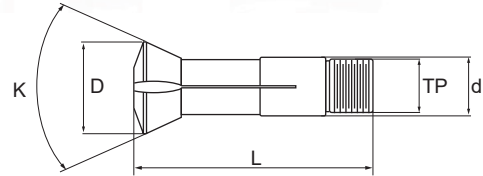
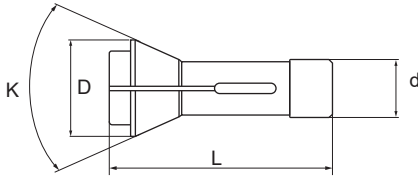
XD35 II XE35 SL35 SL35HP XD35M

Part No	TYPE	DIMENSION					REC.MAX BORE			WORLDWIDE REF.CODE		
		d	D	L	K	TP	Round	Hex	Square	SWISS CODE	US CODE	F. CODE
P4092	HEADSTOCK	40	50	92	32°		35	30	24		TF40	F40-SL35
P4092	SUB	40	50	92	32°		35	30	24		TF40	
PG245T	GUIDEBUSH	45	52	82	32°	M42*1	35	30	25	T245(250.001)	TD45	

XD38 II (F)

Part No	TYPE	DIMENSION					REC.MAX BORE			WORLDWIDE REF.CODE		
		d	D	L	K	TP	Round	Hex	Square	SWISS CODE	US CODE	F. CODE
P4492	HEADSTOCK	44	52	92	33°		38	33	27		TF44	F44 76-92
P4492	SUB	44	52	92	33°		38	33	27		TF44	F44 76-92
PG38SL	GUIDEBUSH	46	53	82	32°		38	32	26	SL38	H38D	

HANWHA



XD38 II -N (S)

Part No	TYPE	DIMENSION					REC.MAX BORE			WORLDWIDE REF.CODE		
		d	D	L	K	TP	Round	Hex	Square	SWISS CODE	US CODE	F. CODE
P4492	HEADSTOCK	44	52	92	33°		38	33	27		TF44	F44 76-92
P4492	SUB	44	52	92	33°		38	33	27		TF44	F44 76-92

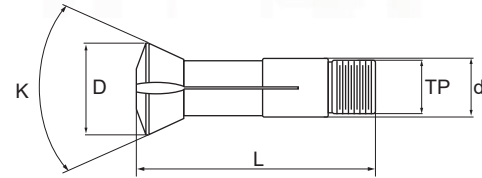
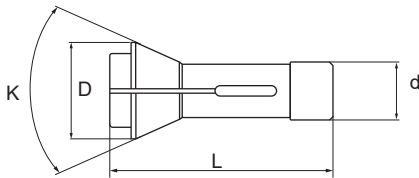
XD38 II -H(F φ40) XD38II-H (S), R (F,S) STL42

Part No	TYPE	DIMENSION					REC.MAX BORE			WORLDWIDE REF.CODE		
		d	D	L	K	TP	Round	Hex	Square	SWISS CODE	US CODE	F. CODE
P4894N	HEADSTOCK	48	60	94	30°		38	33	27		TF48 NFT (0°)	
P4894N	SUB	48	60	94	30°		38	33	27		TF48 NFT (0°)	

STL38H (S) / Standard, Y3 STL38H (S) / none Y3

Part No	TYPE	DIMENSION					REC.MAX BORE			WORLDWIDE REF.CODE		
		d	D	L	K	TP	Round	Hex	Square	SWISS CODE	US CODE	F. CODE
P4894N	ADSTOCK COLL	48	60	94	30°		38	33	27		TF48 NFT (0°)	
P4894N	SUB	48	60	94	30°		38	33	27		TF48 NFT (0°)	

JIN FA



JINN FA JSL-20

Part No	TYPE	DIMENSION					REC.MAX BORE			WORLDWIDE REF.CODE		
		d	D	L	K	TP	Round	Hex	Square	SWISS CODE	US CODE	F. CODE
P2877	HEADSTOCK	28	35	77	32°		23	20	16		BS20	
P2877	SUB	28	35	77	32°		23	20	16		BS20	
PG20HB	GUIDEBUSH	30	36	70	32°	M28*1	23	17	14	486.001	S20HGB	

JINN FA JSL-26

Part No	TYPE	DIMENSION					REC.MAX BORE			WORLDWIDE REF.CODE		
		d	D	L	K	TP	Round	Hex	Square	SWISS CODE	US CODE	F. CODE
P3080	HEADSTOCK	30	42	80	32°		26	22	18	157E	TF30	F30 76-63
P3080	SUB	30	42	80	32°		26	22	18	157E	TF30	F30 76-63
PG227T	GUIDEBUSH	34	41	87.5	20°	M34*1	26	22.5	18	T227(451.001)	CD25	

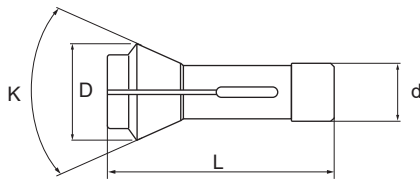
JINN FA JSL-32

Part No	TYPE	DIMENSION					REC.MAX BORE			WORLDWIDE REF.CODE		
		d	D	L	K	TP	Round	Hex	Square	SWISS CODE	US CODE	F. CODE
P3792	HEADSTOCK	37	47	92	32°		32	27	23	EF37/1536E	TF37	F37 76-740
P3792	SUB	37	47	92	32°		32	27	23	EF37/1536E	TF37	F37 76-740
PG32T	GUIDEBUSH	42	48	82	41°	M40*1	32	27.5	22.5		TD32	

JINN FA JSL-42

Part No	TYPE	DIMENSION					REC.MAX BORE			WORLDWIDE REF.CODE		
		d	D	L	K	TP	Round	Hex	Square	SWISS CODE	US CODE	F. CODE
P4894N	HEADSTOCK	48	60	94	30°		38	33	27		TF48 NFT (0°)	

MIYANO



Miyano BNC-34 BND-34 BNE-34 BNJ-34

Part No	TYPE	DIMENSION				REC.MAX BORE			WORLDWIDE REF.CODE		
		d	D	L	K	Round	Hex	Square			
P444108	HEADSTOCK	44.4	54.2	108	30°				BNC34		
P444108	SUB	44.4	54.2	108	30°				BNC34		

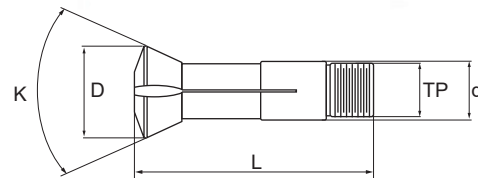
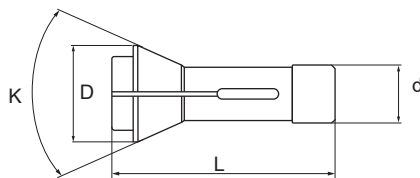
Miyano DIN171E

Part No	TYPE	DIMENSION				REC.MAX BORE			WORLDWIDE REF.CODE		
		d	D	L	K	Round	Hex	Square	SWISS CODE	US CODE	F. CODE
PA4294	HEADSTOCK	42	55	94	30°	36	30	25	171E		F42 76-99

Miyano DIN173E

Part No	TYPE	DIMENSION				REC.MAX BORE			WORLDWIDE REF.CODE		
		d	D	L	K	Round	Hex	Square	SWISS CODE	US CODE	F. CODE
PA4894	HEADSTOCK	48	60	94	30°	42	36	29	173E	TF48	F48 76-81

NOMURA



NOMURA P8

Part No	TYPE	DIMENSION					REC.MAX BORE			WORLDWIDE REF.CODE
		d	D	L	K	TP	Round	Hex	Square	
P12582	HEADSTOCK	12	18	58.2	32°					P853C
PG853D	GUIDEBUSH	14	20	61.5	31°	M14*1	8.5	7	6	P853D

NOMURA P10 NS-P1053

Part No	TYPE	DIMENSION					REC.MAX BORE			WORLDWIDE REF.CODE
		d	D	L	K	TP	Round	Hex	Square	
P1650	HEADSTOCK	16	22	50	31°		10	8	7	P10C/P1053C
PG10D	GUIDEBUSH	16	20	63	31°	M14*1	10	8	7	P10D/P1053D

NOMURA P16 NN-16SB NS-P1253 NS-P1653 SN-160

Part No	TYPE	DIMENSION					REC.MAX BORE			WORLDWIDE REF.CODE
		d	D	L	K (LL)	TP	Round	Hex	Square	
P2068	HEADSTOCK	20	26	68	27°10'					P16C/P1653C
PG16D	GUIDEBUSH	22	26	70	30°	M20*1	15.5	13	11	P16D/P1653D

NOMURA P20 NN-20J2 NN-20UB

Part No	TYPE	DIMENSION					REC.MAX BORE			WORLDWIDE REF.CODE
		d	D	L	K	TP	Round	Hex	Square	
P2667	HEADSTOCK	26	36	67	32°		20.5	17	14	
PG20D	GUIDEBUSH	30	35.2	67.5	32°	M30*1	22	19	16	P20D/NN20KD

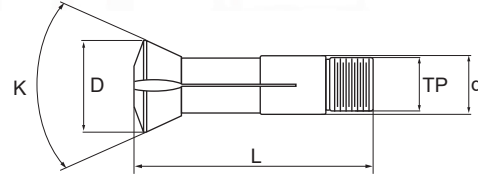
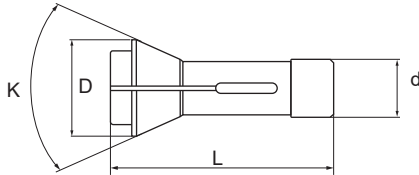
NOMURA P25 NN-25

Part No	TYPE	DIMENSION					REC.MAX BORE			WORLDWIDE REF.CODE
		d	D	L	K (LL)	TP	Round	Hex	Square	
P32835	HEADSTOCK	32	42	83.5	30°20'					P25C/P2553C
PG25D	GUIDEBUSH	36	44	89.5	27°10'	M36*1	25	21	18	P25D/P2553D

NOMURA P30 NN-32UB NN-32YB

Part No	TYPE	DIMENSION					REC.MAX BORE			WORLDWIDE REF.CODE
		d	D	L	K	TP	Round	Hex	Square	
P4285	HEADSTOCK	42	52	85	26°					P30C/NN30TC
PG30D	GUIDEBUSH	44	50	90	26°	M40x1	33	28	23	P30D/NN30TD

KSI



KSI SA12

Part No	TYPE	DIMENSION					REC.MAX BORE			WORLDWIDE REF.CODE		
		d	D	L	K	TP	Round	Hex	Square	SWISS CODE	US CODE	F. CODE
P1664	HEADSTOCK	16	21	64	32°		13	10	8	EF16/1212E	TF16	F16
P1664	SUB	16	21	64	32°		13	10	8	EF16/1212E	TF16	F16
PG125R	GUIDEBUSH	18	22	60	60°	M18*1	13	10	8	171.001	SD125R	

KSI SA20 SM20 SQC20

Part No	TYPE	DIMENSION					REC.MAX BORE			WORLDWIDE REF.CODE		
		d	D	L	K	TP	Round	Hex	Square	SWISS CODE	US CODE	F. CODE
P2577	HEADSTOCK	25	35	77	32°		21	17.5	14.5	145E	TF25	F25 76-64
P2577	SUB	25	35	77	32°		21	17.5	14.5	145E	TF25	F25 76-64
PG223T	GUIDEBUSH	28	34	82	32°	M25*1	20.5	17	14	T223(22.001)	TD25S	

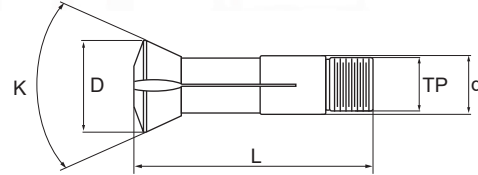
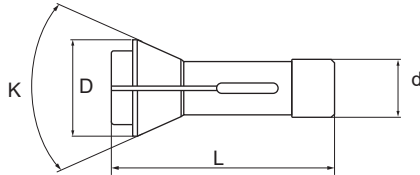
KSI SA26

Part No	TYPE	DIMENSION					REC.MAX BORE			WORLDWIDE REF.CODE		
		d	D	L	K	TP	Round	Hex	Square	SWISS CODE	US CODE	F. CODE
P3275	HEADSTOCK	32	45	75	30°		28	24	19	161E		F32 76-221
P3275	SUB	32	45	75	30°		28	24	19	161E		F32 76-221
PG227T	GUIDEBUSH	34	41	87.5	20°	M34*1	26	22.5	18	T227(451.001)	CD25	

KSI SA32

Part No	TYPE	DIMENSION					REC.MAX BORE			WORLDWIDE REF.CODE		
		d	D	L	K	TP	Round	Hex	Square	SWISS CODE	US CODE	F. CODE
P3792	HEADSTOCK	37	47	92	32°		32	27	23	EF37/1536E	TF37	F37 76-740
P3792	SUB	37	47	92	32°		32	27	23	EF37/1536E	TF37	F37 76-740
PG229T	GUIDEBUSH	42	49	82	32°	M40*1	32	27.5	22.5	T229(28.001)	TD32S	

KSI



KSI SQC32

Part No	TYPE	DIMENSION					REC.MAX BORE			WORLDWIDE REF.CODE		
		d	D	L	K	TP	Round	Hex	Square	SWISS CODE	US CODE	F. CODE
P4492	HEADSTOCK	44	52	92	33°		38	33	27		TF44	F44 76-92
P3792	SUB	37	47	92	32°		32	27	23	EF37/1536E	TF37	F37 76-740
PG229T	GUIDEBUSH	42	49	82	32°	M40*1	32	27.5	22.5	T229(28.001)	TD32S	

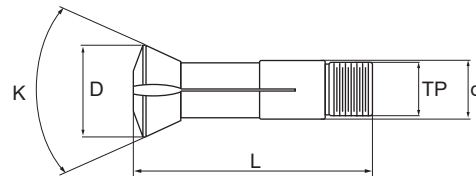
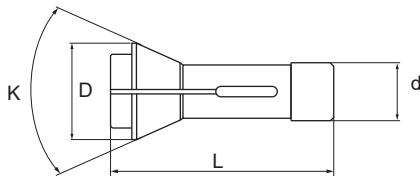
KSI SA38

Part No	TYPE	DIMENSION					REC.MAX BORE			WORLDWIDE REF.CODE		
		d	D	L	K	TP	Round	Hex	Square	SWISS CODE	US CODE	F. CODE
P4492	HEADSTOCK	44	52	92	33°		38	33	27		TF44	F44 76-92
P3792	SUB	37	47	92	32°		32	27	23	EF37/1536E	TF37	F37 76-740
PG246T	GUIDEBUSH	46	53	92	32°	M45*1	38	32	26	T246(467.001)	TD38	

KSI SQC38

Part No	TYPE	DIMENSION					REC.MAX BORE			WORLDWIDE REF.CODE		
		d	D	L	K	TP	Round	Hex	Square	SWISS CODE	US CODE	F. CODE
P4894N	HEADSTOCK	48	60	94	30°		38	33	27	TF48 NFT (0°)		
P4492	HEADSTOCK	44	52	92	33°		38	33	27		TF44	F44 76-92
PG246T	GUIDEBUSH	46	53	92	32°	M45*1	38	32	26	T246(467.001)	TD38	

METHODS



SS20

Part No	TYPE	DIMENSION					REC.MAX BORE			WORLDWIDE REF.CODE		
		d	D	L	K	TP	Round	Hex	Square	SWISS CODE	US CODE	F. CODE
P2577	COLLET	25	35	77	32°		21	17.5	14.5	145E	TF25	F25 76-64
PG20D	GUIDEBUSH	32	39.8	71	60°	M32 x 1	22	19	16	F355(282.001)	TSD20	

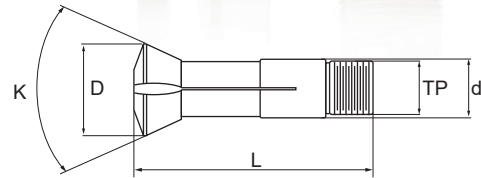
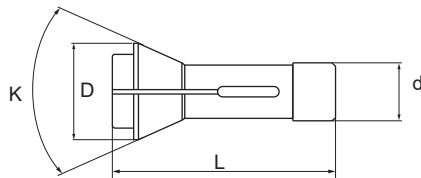
SS25

Part No	TYPE	DIMENSION					REC.MAX BORE			WORLDWIDE REF.CODE		
		d	D	L	K	TP	Round	Hex	Square	SWISS CODE	US CODE	F. CODE
P3080	COLLET	30	42	80	32°		26	22	18	157E	TF30	F30 76-63
PG25T	GUIDEBUSH	28	38	81	60°	M25 x 1	21	17	14	I357(18.001)	TD25	

SS32

Part No	TYPE	DIMENSION					REC.MAX BORE			WORLDWIDE REF.CODE		
		d	D	L	K	TP	Round	Hex	Square	SWISS CODE	US CODE	F. CODE
P3792	COLLET	37	47	92	32°		32	27	23	EF37/1536E	TF37	F37 76-740
PG32T	GUIDEBUSH	42	48	82	41°	M40*1	32	27.5	22.5		TD32	

MAIER



ML-12A/B/C/D

Part No	TYPE	DIMENSION					REC.MAX BORE			WORLDWIDE REF.CODE		
		d	D	L	K	TP	Round	Hex	Square	SWISS CODE	US CODE	F. CODE
P1564	HEADSTOCK	15	21	64	32°		13	11	9	120E	TF15	F15 76-580
P1564	SUB	15	21	64	32°		13	11	9	120E	TF15	F15 76-580
PG125R	GUIDEBUSH	18	22	60	60°	M18*1	13	10	8	171.001	SD125R	

ML-16A/B/C/D

Part No	TYPE	DIMENSION					REC.MAX BORE			WORLDWIDE REF.CODE		
		d	D	L	K	TP	Round	Hex	Square	SWISS CODE	US CODE	F. CODE
P2067	HEADSTOCK	20	28	67	32°		16	14	11.5	138E	TF20	F20 76-87
P2067	SUB	20	28	67	32°		16	14	11.5	138E	TF20	F20 76-87
PG391F	GUIDEBUSH	22	29	68	32°	M22*1	16	12.5	10	F391(39.001)	TD20R	

ML-20A/B/C/D/E

Part No	TYPE	DIMENSION					REC.MAX BORE			WORLDWIDE REF.CODE		
		d	D	L	K	TP	Round	Hex	Square	SWISS CODE	US CODE	F. CODE
P2577	HEADSTOCK	25	35	77	32°		21	17.5	14.5	145E	TF25	F25 76-64
P2577	SUB	25	35	77	32°		21	17.5	14.5	145E	TF25	F25 76-64
PG25NS	GUIDEBUSH	28	34	82	32°	M25*1	20.5	16.5	13.5	T223(22.001)	TD25S	

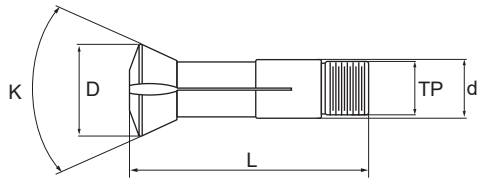
ML-26A/B/C/D/E

Part No	TYPE	DIMENSION					REC.MAX BORE			WORLDWIDE REF.CODE		
		d	D	L	K	TP	Round	Hex	Square	SWISS CODE	US CODE	F. CODE
P3275	HEADSTOCK	32	45	75	30°		28	24	29	161E		F32 76-221
P3275	SUB	32	45	75	30°		28	24	29	161E		F32 76-221
PG227T	GUIDEBUSH	34	41	87.5	20°	M34*1	26	22.5	18	T227(451.001)	CD25	

ML-32A/B/C/D/E,MLK-32

Part No	TYPE	DIMENSION					REC.MAX BORE			WORLDWIDE REF.CODE		
		d	D	L	K	TP	Round	Hex	Square	SWISS CODE	US CODE	F. CODE
P3792	HEADSTOCK	37	47	92	32°		32	27	23	EF37/1536E	TF37	F37 76-740
P3792	SUB	37	47	92	32°		32	27	23	EF37/1536E	TF37	F37 76-740
PG229T	GUIDEBUSH	42	49	82	32°	M40*1	32	27.5	22.5	T229(28.001)	TD32S	

EGURO



SANAX-6 LB6 SANATURN-6/6B

Part No	TYPE	DIMENSION					REC.MAX BORE			WORLDWIDE REF.CODE
		d	D	L	K	TP	Round	Hex	Square	
PT1976	HEADSTOCK	19	26	76	30°	M18.5*1.2	13.5	11	9	EDA-6

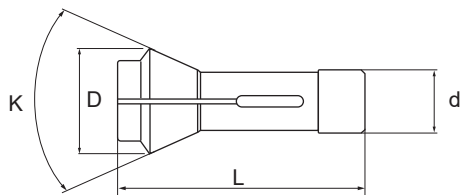
NUCSET-8 NUCBOY-8EX EXP SANAX-8 SANFLEX-8

Part No	TYPE	DIMENSION					REC.MAX BORE			WORLDWIDE REF.CODE
		d	D	L	K	TP	Round	Hex	Square	
PT25102	HEADSTOCK	25	33	102	30°	M24x1.5				EDA-8

SANAX-10 SANATURN-10 NUCLET-10EX.EXP NUCLET-10vv NUCPAL-10EX NUCMAX-10 NUMPAL-10vv EB10 NUCLET10LL/10A NUCROBO-101 NUCJET-102/103

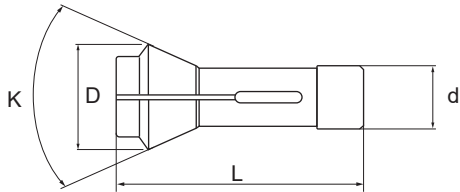
Part No	TYPE	DIMENSION					REC.MAX BORE			WORLDWIDE REF.CODE
		d	D	L	K	TP	Round	Hex	Square	
PT32118	HEADSTOCK	32	42	118	30°	M32x1.5				EDA-10

INDEX CNC LATHE



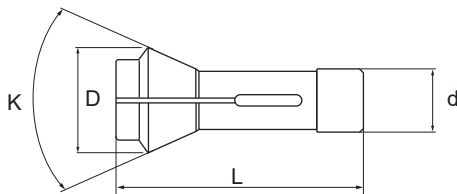
Machine Builders' Model No.	COLLET Part No.	DIMENSION				WORLDWIDE REF.CODE		
		d	D	L	K	SWISS CODE	US CODE	F. CODE
INDEX 25	PA3570	35	43	70	30°	162E		F35 76-67
INDEX 30	PA3580	35	48	80	30°	163E		F35 76-94
INDEX 36	PA4294	42	55	94	30°	171E		F42 76-99
INDEX 42	PA4894	48	60	94	30°	173E	TF48	F48 76-81
INDEX 52	PA5894	58	70	94	30°	177E		F58 17-355
INDEX 60	PA66110	66	84	110	30°	185E		F66 76-59
INDEX 80	PA90130	90	107	130	30°	193E		

LI CO CNC LATHE



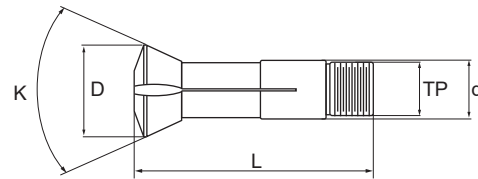
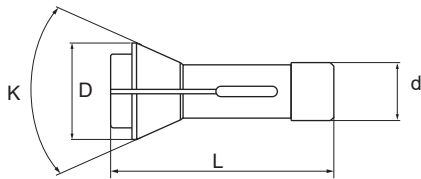
Machine Builders' Model No.	COLLET Part No.	DIMENSION				WORLDWIDE REF.CODE		
		d	D	L	K	SWISS CODE	US CODE	F. CODE
LI CO 32	PA3808	38.08	49	108	30°	164E		F38 76-72
LI CO 41	PA4894	48	60	94	30°	173E	TF48	F48 76-81
LI CO 52	PA5894	58	70	94	30°	177E		F58 17-355
LI CO 65	PA72142	72	90	142	30°	187E		

CHIAH CHYUN CNC LATHE



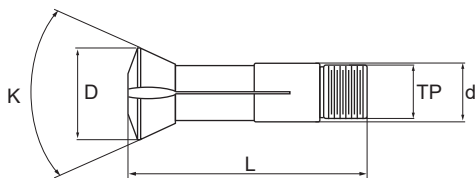
Machine Builders' Model No.	COLLET Part No.	DIMENSION				WORLDWIDE REF.CODE		
		d	D	L	K	SWISS CODE	US CODE	F. CODE
32#	PA3808	38.08	49	108	30°	164E		F38 76-72
36#	PA4294	42	55	94	30°	171E		F42 76-99
42#	PA4894	48	60	94	30°	173E	TF48	F48 76-81
52#	PA5894	58	70	94	30°	177E		F58 17-355

RIKEN CNC LATHE



Machine Builders' Model No.	COLLET Part No.	DIMENSION				
		d	D	L	K	TP
SAD-25	P3066	30	43	66	30°	
SAD-40	P4884	48	66	84	30°	
SAD-50	P5694	56	68	94	30°	
SAD-65	P75100	75	93	100	30°	
PULL-25	PT3688	36	44	88	20°	M32x1.5
PULL-40	PT55110	55	66	110	20°	M50x1.5
PULL-60	PT83132	83	97	132	20°	M78x2.0

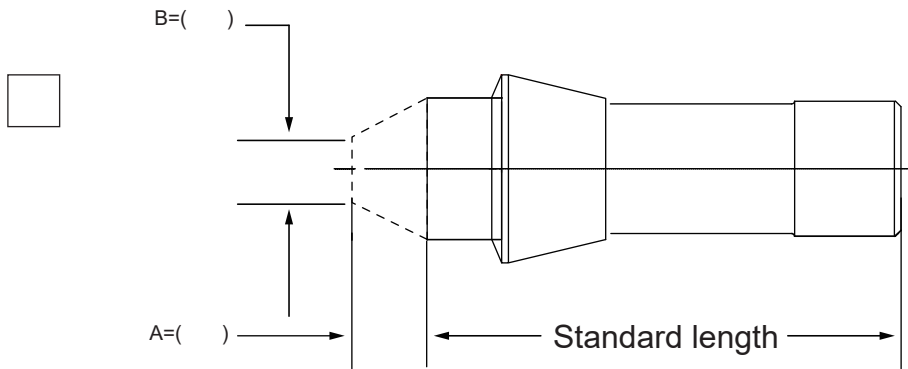
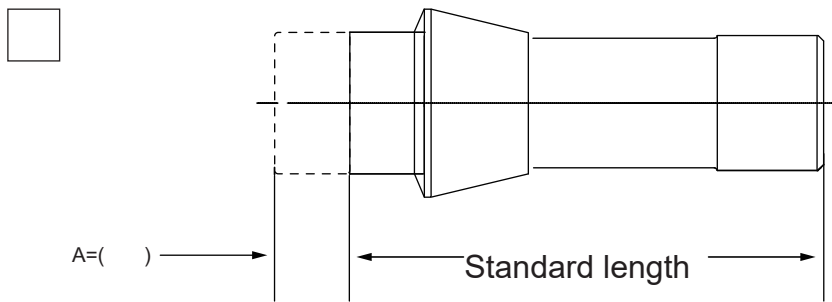
TAKAMAZ CNC LATHE



Machine Builders' Model No.	COLLET Part No.	DIMENSION				
		d	D	L	K	TP
20#	PT25102	25	35	102		M25x1.25
25#	PT36131	36	52	131		M36x2
850(CD37)	PT37101	37	46	101	30°	M32x1.5

Extended Nose

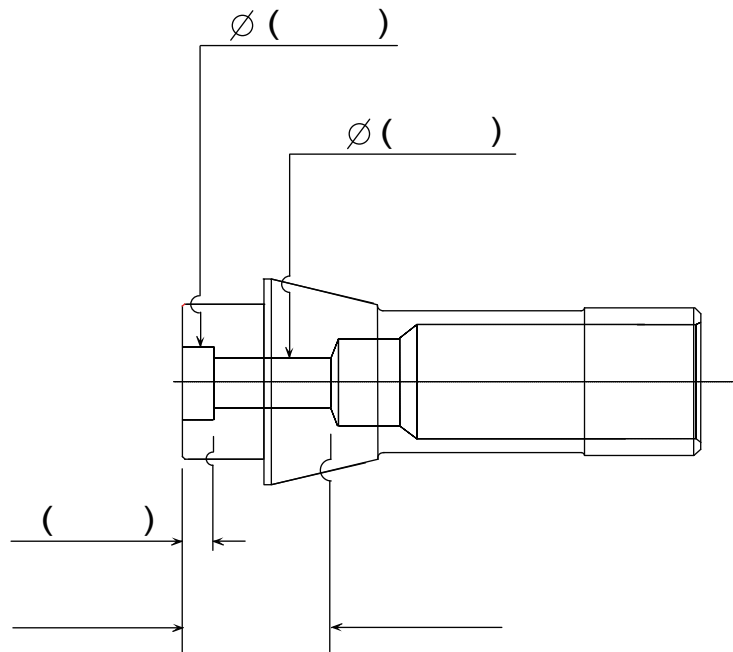
Put into select which long nose type you need



“A” must be given when collet is ordered.and give “B” if you havespecific requirment or go with our standard.

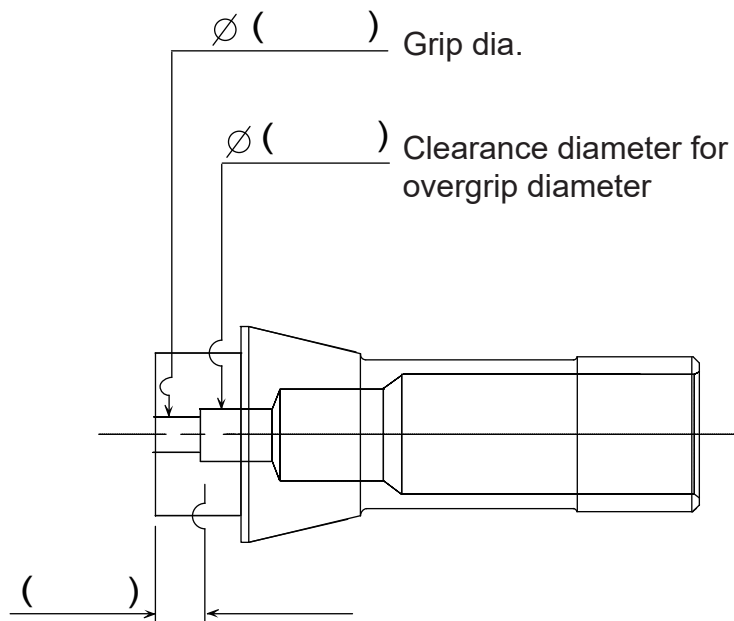
Remark:

STEP BORE



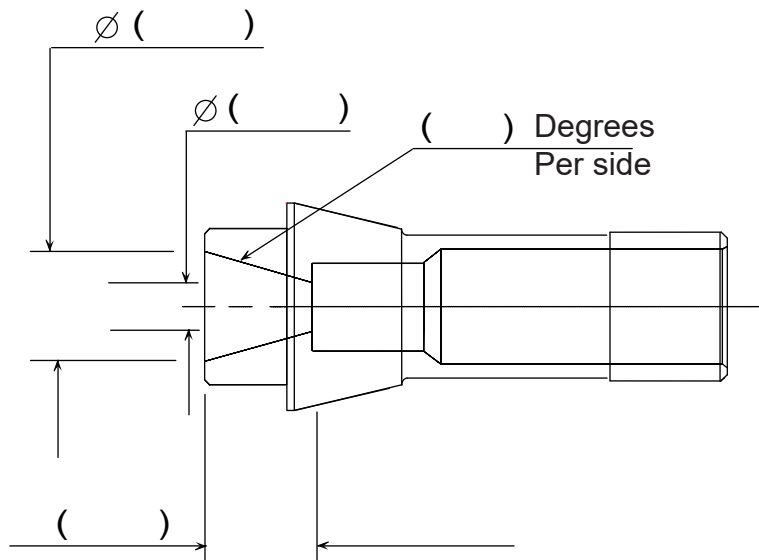
Remark:

OVERGRIP BORE



Remark:

TAPERED BORE



Remark:

BE A DISTRIBUTOR

PRECOLLET®

JOIN US

PRECOLLET has many years of experience in manufacturing Clamping and Cutting tools for swiss CNC sliding head machine. Quality, Fast delivery, High cost performance, Great services.

If you want to improve your business performance, becoming our exclusive distributor is a wise choice:

PRECOLLET last products and technical share!

More flexible order fulfillment to ensure business efficiency!

Preferential distributor purchasing prices to earn higher profits!

Shenzhen Zeling precision industry Co., Ltd.

✉ Email: james.lee@precollet.com

☎ W/A, Skype, Wechat: +8618400145085

🌐 www.precollet.com