



## **AUTOMATIC BAR FEEDER FINGER COLLETS & REVOLVING ENDS**

**Shenzhen Zeling precision industry Co., Ltd.**

✉ Email: [aimee.lo@precollet.com](mailto:aimee.lo@precollet.com)

📞 W/A, Skype, Wechat: +8618400145085

🌐 [www.precollet.com](http://www.precollet.com)

# CONTENTS

I .....	LNS FINGER COLLET
II .....	LNS REVOLVING END
III .....	IEMCA(GIMCO) FINGER COLLET
IV .....	IEMCA(GIMCO) REVOLVING END
V .....	IKURA FINGER COLLET
VI .....	IKURA REVOLVING END
VII .....	PRO FINGER COLLET
VIII .....	PRO REVOLVING END
IX .....	BARLOAD FINGER COLLET
X .....	BARLOAD REVOLVING END
XI .....	ALPS FINGER COLLET & REVOLVING END
XII .....	BAR LOADER COLLET(Pin Lock Type)

# LNS FINGER COLLET

**PRECOLLET®**



Part No.	DIMENSION				FIG
	Φd (Clamp size)	OD (Outer Dia)	AL (Total length)	T (Thread)	
PFL4N	0.8~4.0mm	5mm	98mm	M4P0.7	1
PFL47N	0.8~4.0mm	7mm	98mm	M4P0.7	2
PFL47N1	4.1~6.0mm	7mm	98mm	M4P0.7	2
PFL47N2	2.0~5.5mm	7mm	98mm	M4P0.7	2
PFL4N2	0.8~4.0mm	5mm	28mm	M4P0.7	3
PFL47N3	1.5~6.0mm	7mm	28mm	M4P0.7	4
PFL7N	1.3~6.0mm	7mm	50mm	M4P0.7	5
PFL7N1	1.3~6.5mm	8mm	50mm	M4P0.7	5
PFL7N2	6.6~7.0mm	9mm	50mm	M4P0.7	5
PFL85N	1.5~7.8mm	9.5mm	45mm	M5P0.8	6
PFL85N1	7.9~8.5mm	10mm	45mm	M5P0.8	6
PFL85N2	3.0~10.5mm	12mm	45mm	M5P0.8	7
PFL85N3	10.8~11.0mm	13mm	45mm	M5P0.8	8
PFL85N4	11.5~12.0mm	14mm	45mm	M5P0.8	8
PFL85N5	12.5~13.0mm	15mm	45mm	M5P0.8	8
PFL85N6	13.5mm	15.5mm	45mm	M5P0.8	8
PFL20N	2.5~13.0mm	15mm	60mm	M9P1.0	9
PFL20N1	11.5~15.1mm	18mm	60mm	M9P1.0	10
PFL20N2	15.2~16.0mm	19mm	60mm	M9P1.0	10
PFL20N3	16.5~18.0mm	20mm	60mm	M9P1.0	10

**Note:** PFL47N Finger Outside Diameter 5.0mm, PFL47N2 is High Speed version, up to 12000 rpm.



Fig 11



Fig 12



Fig 13



Fig 14



Fig 15



Fig 16



Fig 17



Fig 18

Part No.	DIMENSION				FIG
	Φd (Clamp size)	OD (Outer Dia)	AL (Total length)	T (Thread)	
PFL20N4	18.5~19.0mm	22mm	60mm	M9P1.0	11
PFL20N5	19.5~21.0mm	24mm	60mm	M9P1.0	11
PFL20N6	21.5~22.0mm	25mm	60mm	M9P1.0	11
PFL326N	18.0~19.5mm	22mm	60mm	M9P1.0	12
PFL326N1	20.0~21.0mm	23mm	60mm	M9P1.0	12
PFL326N2	21.5~23.0mm	26mm	60mm	M9P1.0	12
PFL326N3	24.0~26.0mm	28mm	60mm	M9P1.0	12
PFL326N4	26.5~28.0mm	30mm	60mm	M9P1.0	12
PFL326N5	28.5mm~29.5mm	32mm	60mm	M9P1.0	12
PFLSN20	3.0~18.0mm	20mm	60mm	M10P1.0	13
PFLSN23	16.0~21.0mm	23mm	60mm	M10P1.0	14
PFLSN25	16.5~23.0mm	25mm	60mm	M10P1.0	14
PFLSN27	16.5~25.0mm	27mm	60mm	M10P1.0	14
PFLSN32	23.5~28.0mm	32mm	70mm	M17P1.0	15
PFLSN35	28.5~33.0mm	35mm	80mm	M25P1.5	16
PFLSN37	31.0~34.0mm	37mm	80mm	M25P1.5	17
PFLSN38	31.0~35.0mm	38mm	80mm	M25P1.5	17
PFLSN42	31.5~40.0mm	42mm	80mm	M25P1.5	17
PFLSN45	38.5~42.2mm	45mm	80mm	M25P1.5	17
PFLSN51	42.5~48.0mm	51mm	80mm	M25P1.5	18
PFL32	4.0~30.0mm	32mm	80mm	M25P1.5	15
PFL40	21.0~36.5mm	40mm	80mm	M25P1.5	17



Part No.	DIMENSION				FIG
	OD (Outer Dia)	L (Total length)	M (Thread)	P/T (PIN/Thread)	
PRL4	5mm	77.1mm	M4P0.7	M4P0.7	1
PRL47	7mm	77.2mm	M4P0.7	M4P0.7	2
PRL7N	7mm	65.3mm	M4P0.7	M6P0.75	3
PRL7N1	7mm	65.3mm	M4P0.7	M6*1.0	3
PRL7N2	8mm	65.3mm	M4P0.7	M6P0.75	3
PRL7N3	8mm	65.3mm	M4P0.7	M6*1.0	3
PRL7N4	8mm	61.5mm	M4P0.7	M6P0.75	4
PRL7N5	7mm	57.5mm	M4P0.7	M6P0.75	5
PRL75	7.5mm	57.5mm	M4P0.7	M6*1.0	5
PRL7N6	8mm	57.5mm	M4P0.7	M6P0.75	5
PRL85N	9.5mm	63.5mm	M5P0.8	M7P0.75	6
PRL85N1	9.5mm	66.3mm	M5P0.8	M7P0.75	6
PRL85N2	10mm	59.5mm	M5P0.8	M7P0.75	7
PRL85N3	10mm	61.1mm	M5P0.8	M7P0.75	7
PRL85N4	9mm	64.5mm	M5P0.8	M7P0.75	8
PRL85N5	10mm	64.5mm	M5P0.8	M7P0.75	8
PRL12N	12mm	64.5mm	M5P0.8	M7P0.75	9
PRL12N1	12mm	64.5mm	M5P0.8	M8P1.0	9
PRL20N	15mm	92.2mm	M9P1.0	M12P1.0	10
PRL20N1	15mm	92.2mm	M9P1.0	M12P1.0	11
PRL20N2	15mm	92.2mm	M9P1.0	M12P1.25	12



Part No.	DIMENSION				FIG
	OD (Outer Dia)	L (Total length)	M (Thread)	P/T (PIN/Thread)	
PRL20N3	20mm	92.2mm	M9P1.0	M12P1.25	13
PRL25N	25mm	92.2mm	M9P1.0	M12P1.25	14
PRL20N4	20.5mm	207.5mm	M10P1.0	PIN=4.0mm	15
PRL20N5	20.5mm	193.5mm	M10P1.0	M12P1.25	
PRL22	22.5mm	207.5mm	M10P1.0	PIN=4.0mm	15
PRL23N	22.5mm	207.5mm	M10P1.0	PIN=4.0mm	15
PRL23N1	22.5mm	193.5mm	M10P1.0	M12P1.25	
PRL25N1	25.5mm	207.5mm	M10P1.0	PIN=5.0mm	16
PRL25N2	25.5mm	193.5mm	M10P1.0	M16P1.5	
PRL27N	27.5mm	207.5mm	M10P1.0	PIN=5.0mm	16
PRL27N1	27.5mm	193.5mm	M10P1.0	M16P1.5	
PRL32N	32.5mm	165.0mm	M25P1.5	PIN=5.0mm	17
PRL32N1	32.5mm	165.0mm	M25P1.5	M27	18
PRL35N	35.5mm	165.0mm	M25P1.5	PIN=6.0mm	17
PRL35N1	35.5mm	165.0mm	M25P1.5	M29	18
PRL37N	37.5mm	165.0mm	M25P1.5	PIN=6.0mm	17
PRL37N1	37.5mm	165.0mm	M25P1.5	M29	18
PRL38N	38.5mm	165.0mm	M25P1.5	PIN=6.0mm	17
PRL38N1	38.5mm	165.0mm	M25P1.5	M29	18
PRL42N	41.5mm	165.0mm	M25P1.5	PIN=6.0mm	19
PRL42N1	41.5mm	165.0mm	M25P1.5	M34	20
PRL45N	45.5mm	165.0mm	M25P1.5	PIN=6.0mm	19
PRL45N1	45.5mm	165.0mm	M25P1.5	M38	20
PRL51N	51.5mm	165.0mm	M25P1.5	PIN=6.0mm	21
PRL51N1	51.5mm	165.0mm	M25P1.5	M42	22

# IEMCA(GIMCO) FINGER COLLET

**PRECOLLET®**



Fig 1



Fig 2



Fig 3



Fig 4



Fig 5



Fig 6



Fig 7



Fig 8



Fig 9



Fig 10



Fig 11



Fig 12



Fig 13



Fig 14

Part No.	DIMENSION				FIG
	Φd (Clamp size)	OD (Outer Dia)	AL (Total length)	T (Thread)	
PF4	0.8~4mm	5mm	98mm	M4P0.7	1
PF5	2~4mm	5mm	37mm	M4P0.5	2
PF47N	0.8~4mm	7mm	98mm	M4P0.7	3
PF47N1	4.1~6mm	7mm	98mm	M4P0.7	3
PF47N2	2~5.5mm	7mm	98mm	M4P0.7	3
PFI75	2~6mm	7.5mm	40mm	M5P0.8	4
PFI10	1.5~8.5mm	10mm	42mm	M6P0.75	5
PFI12N	1.5~10.5mm	12mm	42mm	M7P0.75	6
PFI12N1	11mm	13mm	42mm	M7P0.75	6
PFI15	2~13mm	15mm	42mm	M8P1.0	7
PFI16	12~14mm	16mm	42mm	M8P1.0	7
PFI20	3~18.5mm	20mm	60mm	M10P1.0	8
PFI23	16~21mm	23mm	60mm	M10P1.0	9
PFI25	16.5~23mm	25mm	60mm	M10P1.0	10
PFI27	16.5~25.5mm	27mm	60mm	M10P1.0	9
PFI32	4~30mm	32mm	80mm	M25P1.5	11
PFI35	28.5~32mm	35mm	80mm	M25P1.5	12
PFI37	31~34mm	37mm	80mm	M25P1.5	13
PFI38	31~35mm	38mm	80mm	M25P1.5	13
PFI40	21~36.5mm	40mm	80mm	M25P1.5	13
PFI42	31.5~40mm	42mm	80mm	M25P1.5	13
PFI45	38.5~42.2mm	45mm	80mm	M25P1.5	13
PFI51	42.5~48mm	51mm	80mm	M25P1.5	14



Part No.	DIMENSION				FIG
	OD (Outer Dia)	L (Total length)	M (Thread)	P/T (PIN/Thread)	
PRI75	7.5mm	151mm	M5P0.5	M6P0.75	1
PRI10N	10.5mm	137.5mm	M6P0.75	M8P1.0	2
PRI10N1	10.5mm	167mm	M6P0.75	PIN=3.0	3
PRI12	12.5mm	173mm	M7P0.75	PIN=3.0	4
PRI15	15.5mm	195mm	M8P1.0	PIN=4.0	5
PRI16	16.5mm	195mm	M8P1.0	PIN=4.0	5
PRI18	18.5mm	195mm	M8P1.0	PIN=4.0	5
PRI19	19.5mm	195mm	M8P1.0	PIN=4.0	5
PRI20	20.5mm	207.5mm	M10P1.0	PIN=4.0	6
PRI22	22.5mm	207.5mm	M10P1.0	PIN=4.0	6
PRI23	23.5mm	207.5mm	M10P1.0	PIN=4.0	6
PRI25	25.5mm	207.5mm	M10P1.0	PIN=5.0	7
PRI27	27.5mm	207.5mm	M10P1.0	PIN=5.0	7
PRI30	30.5mm	165mm	M25P1.5	PIN=5.0	8
PRI32	32.5mm	165mm	M25P1.5	PIN=5.0	8
PRI35	35.5mm	165mm	M25P1.5	PIN=5.0	9
PRI37	37.5mm	165mm	M25P1.5	PIN=5.0	9
PRI38	38.5mm	165mm	M25P1.5	PIN=5.0	9
PRI40	40.5mm	165mm	M25P1.5	PIN=6.0	10
PRI42	42.5mm	165mm	M25P1.5	PIN=6.0	10
PRI45	45.5mm	165mm	M25P1.5	PIN=6.0	10
PRI51N	51.5mm	165mm	M25P1.5	PIN=6.0	11
PRI51N1	51.5mm	221mm	M25P1.5	PIN=6.0	12



# IKURA FINGER COLLET

**PRECOLLET®**



Fig 1



Fig 2



Fig 3



Fig 4



Fig 5



Fig 6



Fig 7



Fig 8



Fig 9

Part No.	DIMENSION				FIG
	$\Phi d$ (Clamp size)	OD (Outer Dia)	AL (Total length)	T (Thread)	
PFIK4N	0.8~4.0mm	5mm	98mm	M4P0.7	1
PFIK4N1	0.8~4.0mm	5mm	28mm	M4P0.7	2
PFIK7	1.5~6.0mm	7mm	40mm	M6P1.0	3
PFIK8	1.5~6.5mm	8mm	40mm	M6P1.0	3
PFIK10	1.5~8.5mm	10mm	40mm	M6P1.0	4
PFIK12	3~10.5mm	12mm	40mm	M6P1.0	5
PF1555-2	3~13.0mm	15mm	55mm	PIN2.0	6
PF1555	3~13.0mm	15mm	55mm	PIN6.0	
PF2055	3~18.0mm	20mm	55mm	PIN6.0	7
PF2576	5~23.0mm	25mm	76mm	PIN8.0	8
PF3276	5~28.0mm	32mm	76mm	PIN8.0	9



Fig 1

Fig 2

Fig 3

Fig 4

Fig 5

Fig 6

Fig 7

Fig 8

Part No.	DIMENSION				FIG
	OD (Outer Dia)	L (Total length)	M (Thread)	P/T (PIN/Thread)	
PRIK4	5mm	77.1mm	M4P0.7	M4P0.7	1
PRIK7	7mm	67.5mm	M6P1.0	M6P1.0	2
PRIK8	8mm	67.5mm	M6P1.0	M6P1.0	2
PRIK10	10mm	67.5mm	M6P1.0	M6P1.0	3
PRIK12	12mm	67.5mm	M6P1.0	M6P1.0	4
PRIK15	15mm	119.5mm	PIN=6.0	M12P1.25	5
PRIK16	16.3mm	119.5mm	PIN=6.0	M12P1.25	6
PRIK17	17mm	119.5mm	PIN=6.0	M12P1.25	6
PRIK19	19mm	119.5mm	PIN=6.0	M12P1.25	6
PRIK20	20mm	119.5mm	PIN=6.0	M12P1.25	6
PRIK21	20.5mm	119.5mm	PIN=6.0	M12P1.25	6
PRIK22	21mm	119.5mm	PIN=6.0	M12P1.25	6
PRIK25	25mm	160.3mm	PIN=8.0	M20P1.5	7
PRIK32	32mm	160.3mm	PIN=8.0	M20P1.5	8



Part No.	DIMENSION				FIG
	Φd (Clamp size)	OD (Outer Dia)	AL (Total length)	T (Thread)	
PFP4	0.8~4mm	5mm	98mm	M4P0.7	1
PFP47N	0.8~4mm	7mm	98mm	M4P0.7	2
PFP47N1	4.1~6mm	7mm	98mm	M4P0.7	2
PFP47N2	2.~5.5mm	7mm	98mm	M4P0.7	2
PFP10	1.5~8.5mm	10mm	42mm	M6P0.75	3
PFP12	1.5~10.5mm	12mm	42mm	M7P0.75	4
PFP15	2~13mm	15mm	42mm	M8P1.0	5
PFP16N	12~14mm	16mm	42mm	M8P1.0	5
PFP16N1	3~13mm	15mm	60mm	M12P1.0	6
PFP16N2	12~14mm	16mm	60mm	M12P1.0	6
PFP20N	3~18.5mm	20mm	60mm	M10P1.0	7
PFP20N1	3~18mm	20mm	60mm	M12P1.0	7
PFP23	16~21mm	23mm	60mm	M10P1.0	8
PFP25N	16.5~23mm	25mm	60mm	M10P1.0	9
PFP25N1	5~19.5mm	23mm	80mm	M18P1.0	9
PFP25N2	20~23mm	25mm	80mm	M18P1.0	10
PFP27	16.5~25.5mm	27mm	60mm	M10P1.0	9
PFP32	4~30mm	32mm	80mm	M25P1.5	11
PFP35	28.5~32mm	35mm	80mm	M25P1.5	12
PFP37	31~34mm	37mm	80mm	M25P1.5	13
PFP38	31~35mm	38mm	80mm	M25P1.5	13
PFP40	21~36.5mm	40mm	80mm	M25P1.5	13
PFP42	31.5~40mm	42mm	80mm	M25P1.5	13
PFP45	38.5~42.2mm	45mm	80mm	M25P1.5	13
PFP51	42.5~48mm	51mm	80mm	M25P1.5	14



Part No.	DIMENSION				FIG
	OD (Outer Dia)	L (Total length)	M (Thread)	P/T (PIN/Thread)	
PRP10	10.5mm	167mm	M6P0.75	PIN=3.0	1
PRP12N	12.5mm	173mm	M7P0.75	PIN=3.0	2
PRP12N1	12mm	113.5mm	M7P0.75	M7P0.75	3
PRP15	15.5mm	195mm	M8P1.0	PIN=4.0	4
PRP16N	16.5mm	195mm	M8P1.0	PIN=4.0	4
PRP16N1	16mm	147mm	M12P1.0	M10P1.0	5
PRP18	18.5mm	195mm	M8P1.0	PIN=4.0	4
PRP19	19.5mm	195mm	M8P1.0	PIN=4.0	4
PRP20N	20.5mm	207.5mm	M10P1.0	PIN=4.0	6
PRP22	22.5mm	207.5mm	M10P1.0	PIN=4.0	6
PRP23	23.5mm	207.5mm	M10P1.0	PIN=4.0	6
PRP20N1	20mm	145mm	M12P1.0	M10P1.0	7
PRP25N	25.5mm	207.5mm	M10P1.0	PIN=5.0	8
PRP27	27.5mm	207.5mm	M10P1.0	PIN=5.0	8
PRP25N1	26mm	145mm	M18P1.0	M14P1.0	9
PRP30	30.5mm	165mm	M25P1.5	PIN=5.0	10
PRP32	32.5mm	165mm	M25P1.5	PIN=5.0	10
PRP35	35.5mm	165mm	M25P1.5	PIN=5.0	11
PRP37	37.5mm	165mm	M25P1.5	PIN=5.0	11
PRP38	38.5mm	165mm	M25P1.5	PIN=5.0	11
PRP40	40.5mm	165mm	M25P1.5	PIN=6.0	12
PRP42	42.5mm	165mm	M25P1.5	PIN=6.0	12
PRP45	45.5mm	165mm	M25P1.5	PIN=6.0	12
PRP51	51.5mm	165mm	M25P1.5	PIN=6.0	13

# BARLOAD FINGER COLLET

**PRECOLLET®**



Part No.	DIMENSION				FIG
	$\Phi d$ (Clamp size)	OD (Outer Dia)	AL (Total length)	T (Thread)	
PFB4N	0.8~4.0	5	98mm	M4P0.7	1
PFB47N	0.8~4.0	7	98mm	M4P0.7	2
PFB47N1	4.1~6.0	7	98mm	M4P0.7	2
PFB4N1	0.8~4.0	5	28mm	M4P0.7	3
PFB47N2	1.5~6.0	7	28mm	M4P0.7	4
PFB7N	1.3~6.0	7	50mm	M4P0.7	5
PFB7N1	1.3~6.5	8	50mm	M4P0.7	5
PFB7N2	6.6~7.0	9	50mm	M4P0.7	5
PFB85N	1.5~7.8	9.5	45mm	M5P0.8	6
PFB85N1	7.9~8.5	10	45mm	M5P0.8	6
PFB85N2	3.0~10.5	12	45mm	M5P0.8	7
PFB85N3	10.8~11.0	13	45mm	M5P0.8	8
PFB85N4	11.5~12.0	14	45mm	M5P0.8	8
PFB85N5	12.5~13.0	15	45mm	M5P0.8	8
PFB85N6	13.5	15.5	45mm	M5P0.8	8
PFB20N	2.5~13.0	15	60mm	M9P1.0	9
PFB20N1	11.5~15.1	18	60mm	M9P1.0	10
PFB20N2	15.2~16.0	19	60mm	M9P1.0	10
PFB20N3	16.5~18.0	20	60mm	M9P1.0	10



Fig 11



Fig 12



Fig 13



Fig 14



Fig 15



Fig 16



Fig 17



Fig 18

Part No.	DIMENSION				FIG
	Φd (Clamp size)	OD (Outer Dia)	AL (Total length)	T (Thread)	
PFB20N4	18.5~19.0	22	60mm	M9P1.0	11
PFB20N5	19.5~21.0	24	60mm	M9P1.0	11
PFB20N6	21.5~22.0	25	60mm	M9P1.0	11
PFB326N	18.0~19.5	22	60mm	M9P1.0	12
PFB326N1	20.0~21.0	23	60mm	M9P1.0	12
PFB326N2	21.5~23.0	26	60mm	M9P1.0	12
PFB326N3	24.0~26.0	28	60mm	M9P1.0	12
PFB326N4	26.5~28.0	30	60mm	M9P1.0	12
PFB326N5	28.5~29.5	32	60mm	M9P1.0	13
PFBSN20	3.0~18.0	20	60mm	M10P1.0	14
PFBSN23	16.0~21.0	23	60mm	M10P1.0	14
PFBSN25	16.5~23.0	25	60mm	M10P1.0	14
PFBSN27	16.5~25.0	27	60mm	M10P1.0	14
PFBSN32	23.5~28.0	32	70mm	M17P1.0	15
PFBSN35	28.5~33.0	35	80mm	M25P1.5	16
PFBSN37	31.0~34.0	37	80mm	M25P1.5	17
PFBSN38	31.0~35.0	38	80mm	M25P1.5	17
PFBSN42	31.5~40.0	42	80mm	M25P1.5	17
PFBSN45	38.5~42.2	45	80mm	M25P1.5	17
PFBSN51	42.5~48.0	51	80mm	M25P1.5	18
PFB32	4.0~30.0	32	80mm	M25P1.5	15
PFB40	21.0~36.5	40	80mm	M25P1.5	17

**Note:**PFB47N Finger Outside Diameter 5.0mm



Part No.	DIMENSION				FIG
	OD (Outer Dia)	L (Total length)	M (Thread)	P/T (PIN/Thread)	
PRB4	5mm	77.1mm	M4P0.7	M4P0.7	1
PRB47	7mm	77.2mm	M4P0.7	M4P0.7	2
PRB7N	7mm	65.3mm	M4P0.7	M6P0.75	3
PRB7N1	7mm	65.3mm	M4P0.7	M6*1.0	3
PRB7N2	8mm	65.3mm	M4P0.7	M6P0.75	3
PRB7N3	8mm	65.3mm	M4P0.7	M6*1.0	3
PRB7N4	8mm	61.5mm	M4P0.7	M6P0.75	4
PRB7N5	7mm	57.5mm	M4P0.7	M6P0.75	5
PRB75	7.5mm	57.5mm	M4P0.7	M6*1.0	5
PRB7N6	8mm	57.5mm	M4P0.7	M6P0.75	5
PRB85N	9.5mm	63.5mm	M5P0.8	M7P0.75	6
PRB85N1	9.5mm	66.3mm	M5P0.8	M7P0.75	6
PRB85N2	10mm	59.5mm	M5P0.8	M7P0.75	7
PRB85N3	10mm	61.1mm	M5P0.8	M7P0.75	7
PRB85N4	9mm	64.5mm	M5P0.8	M7P0.75	8
PRB85N5	10mm	64.5mm	M5P0.8	M7P0.75	8
PRB12N	12mm	64.5mm	M5P0.8	M7P0.75	9
PRB12N1	12mm	64.5mm	M5P0.8	M8P1.0	9
PRB15	15.5mm	182.5mm	M9P1.0	PIN=4.0mm	10
PRB20	20.5mm	207.5mm	M10P1.0	PIN=4.0mm	11
PRB25	25.5mm	207.5mm	M10P1.0	PIN=5.0mm	12
PRB32	32.5mm	165.0mm	M25P1.5	PIN=5.0mm	13



Fig 1



Fig 2



Fig 3



Fig 4

Part No.	DIMENSION				FIG
	Φd (Clamp size)	OD (Outer Dia)	AL (Total length)	T (Thread)	
PFA20N	3~12.7mm	15mm	75mm	M10P1.0	1
PFA20N1	13~15mm	18mm	75mm	M10P1.0	2
PFA20N2	15.5~16mm	19mm	75mm	M10P1.0	2
PFA20N3	16.5~18mm	20mm	75mm	M10P1.0	2
PFA32N	8~18mm	24mm	110mm		3
PFA32N1	18.5~19mm	26mm	110mm		3
PFA32N2	19.5~26.5mm	32mm	110mm		4
PFA32N3	27~29.5mm	35mm	110mm		4
PFA32N4	30~33mm	38mm	110mm		4
PFA32N5	33.5~36mm	42mm	110mm		4



Fig 1



Fig 2



Fig 3



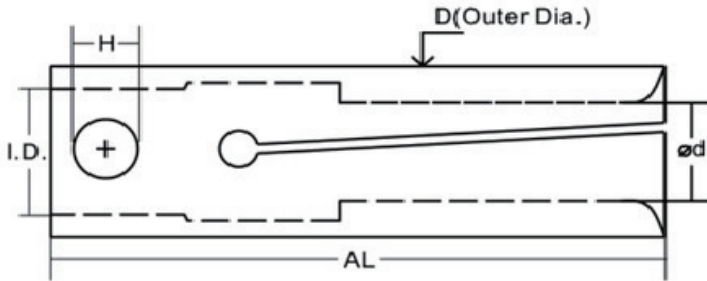
Fig 4

Part No.	DIMENSION				FIG
	OD (Outer Dia)	L (Total length)	M (Thread)	P/T (PIN/Thread)	
PRA12	12mm	82.2mm	M6P1.0	M8	1
PRA16	16mm	70.1mm	M10P1.0	M14P1.0	2
PRA20	20mm	72.2mm	M10P1.0	M16P1.0	3
PRA26	26mm	81.1mm	M22P1.0	PIN=4	4



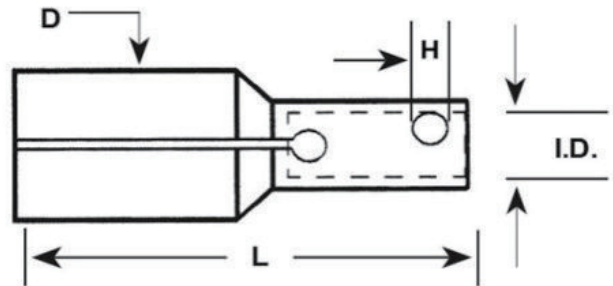
# BAR LOADER COLLET(Pin Lock Type)

**PRECOLLET®**



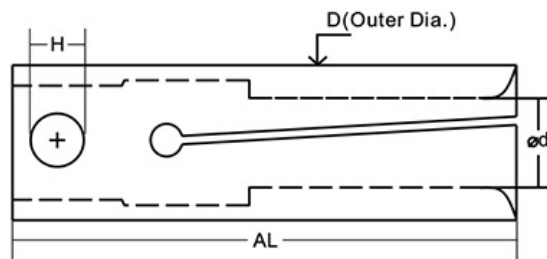
Part No.	DIMENSION				Swiss Code
	D (Outer Dia)	AL (Total length)	I.D.	ΦH	
PF0528	5	28	3.5	1.5	
PF0737	7	37	5	3	
PF0728	7	28	3.5	1.5	
PF1040	10	40	7	4	210E
PF1240	12	40	8	4	212E
PF1555	15	55	10	6	
PF1540	15	40	11	6	203E
PF1550	15	50	11	6	
PF1555	15	55	7	2	
PF1665	16	65	11	6	
PF1640	16	40	11	6	
PF1755	17	55	7	2	
PF1745	17	45	11	6	
PF1840	18	40	11	6	218E
PF1957-6	19	57	10	6	
PF1957-2	19	57	10	2	
PF1940	19	40	11	6	
PF2056	20	56	10	6	
PF2065	20	65	14	8	225E
PF2265	22	65	14	8	
PF2565	25	65	20	8	222E
PF2576	25	76	16	8	
PF3065	30	65	20	8	
PF3265	32	65	20	8	
PF3276	32	76	16	8	
PF3490	34	90	20	8	
PF3565	35	65	20	8	
PF3665			20	8	

**FOR IKURA BAR LOADER**



Part No.	DIMENSION					FIG
	D (Outer Dia)	L (Total length)	I.D.	ΦH	Φd	
PF1555-2	15	55	10	2	3.0-13.0	1
PF1555	15	55	10	6	3.0-13.0	1
PF2055	20	55	10	6	3.0-18.0	2
PF2576	25	76	16	8	5.0-23.0	3
PF3276	32	76	16	8	5.0-28.0	4

**FOR TOP BAR LOADER**



Part No.	DIMENSION				FIG
	D (Outer Dia)	AL (Total length)	ΦH	Φd	
PF3280	32	80	8	4.0-28.0	1
PF3580	35	80	8	0.8-4.0	1
PF4280	42	80	8	31.5-38.0	2
PF4580	45	80	8	38.5-41.0	2
PF5080	50	80	8	41.5-46.0	2
PF5280	52	80	8	47.0-48.0	2
PF5580	55	80	8	49.0-51.0	2
PF6080	60	80	8	52.0-56.0	2
PF6580	65	80	8	57.0-60.0	2

**BE A DISTRIBUTOR**

**PRECOLLET®**

## **JOIN US**

PRECOLLET has many years of experience in manufacturing Clamping and Cutting tools for swiss CNC sliding head machine. Quality, Fast delivery, High cost performance, Great services.

If you want to improve your business performance, becoming our exclusive distributor is a wise choice:

PRECOLLET last products and technical share!

More flexible order fulfillment to ensure business efficiency!

Preferential distributor purchasing prices to earn higher profits!

**Shenzhen Zeling precision industry Co., Ltd.**

✉ Email: [aimee.lo@precollet.com](mailto:aimee.lo@precollet.com)

📞 W/A, Skype, Wechat: +8618400145085

🌐 [www.precollet.com](http://www.precollet.com)